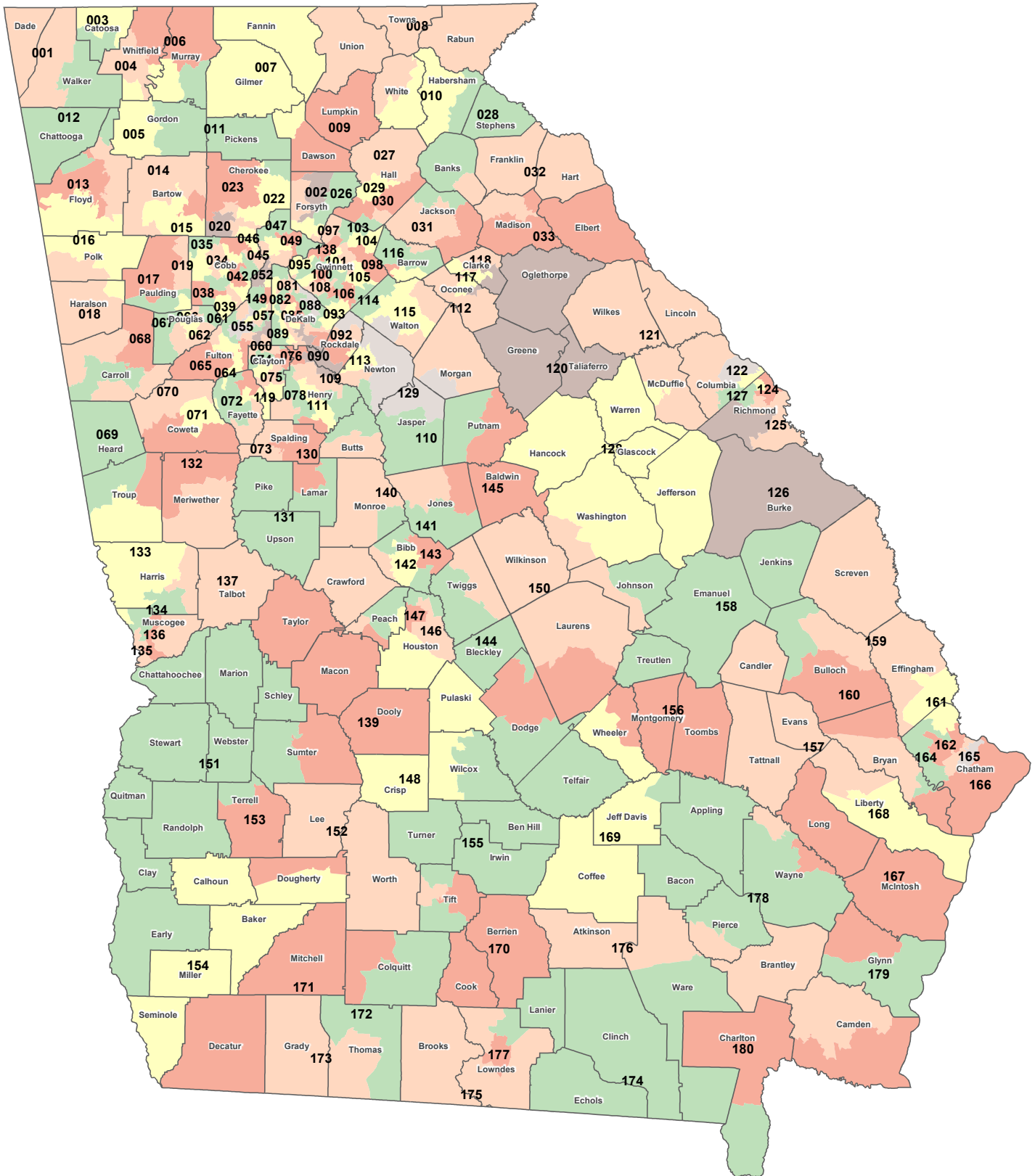


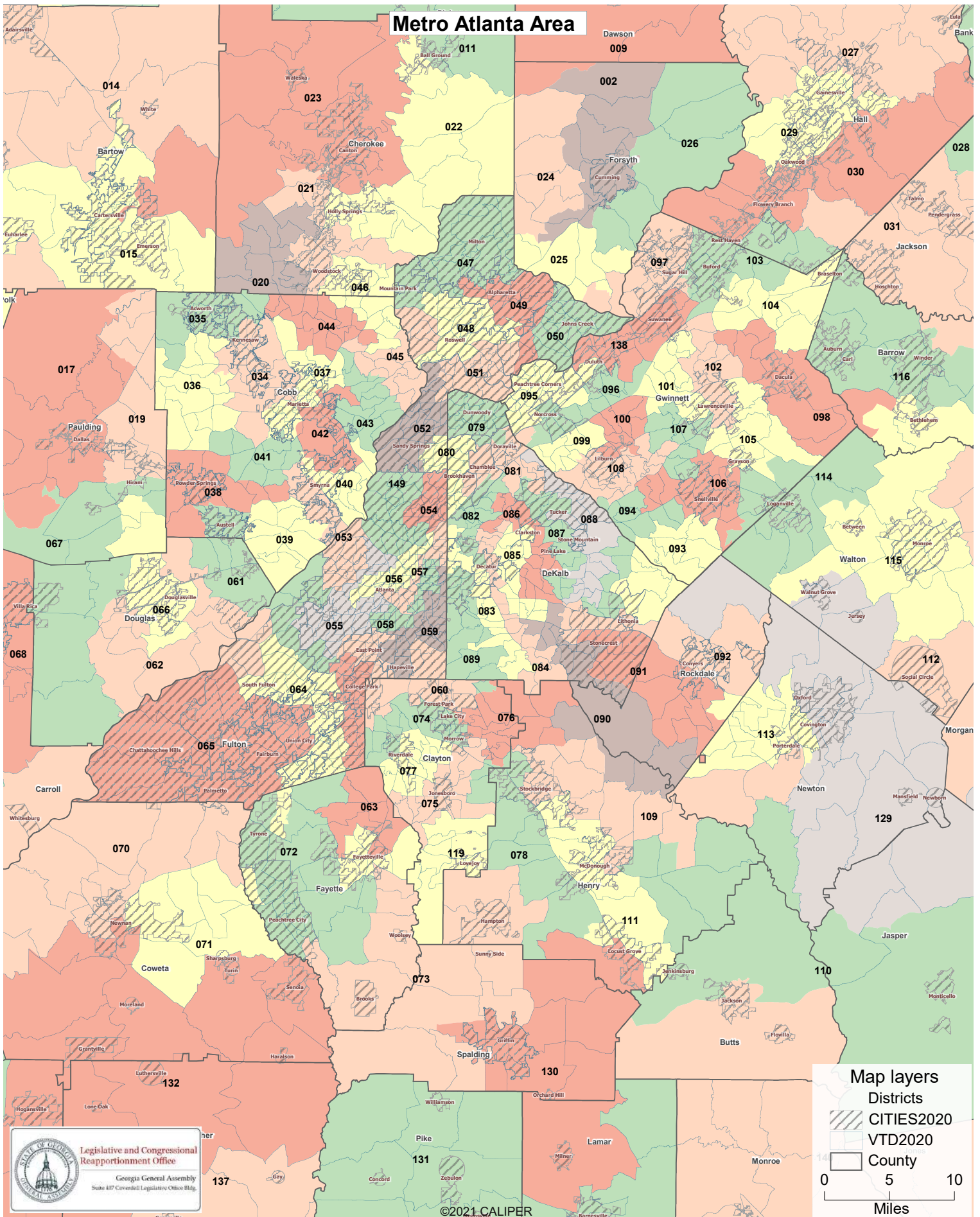
# Draft- Georgia House Districts

Client: H143  
Plan: GHDC-HousePlan-2021  
Type: House



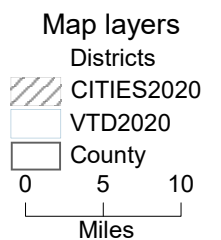
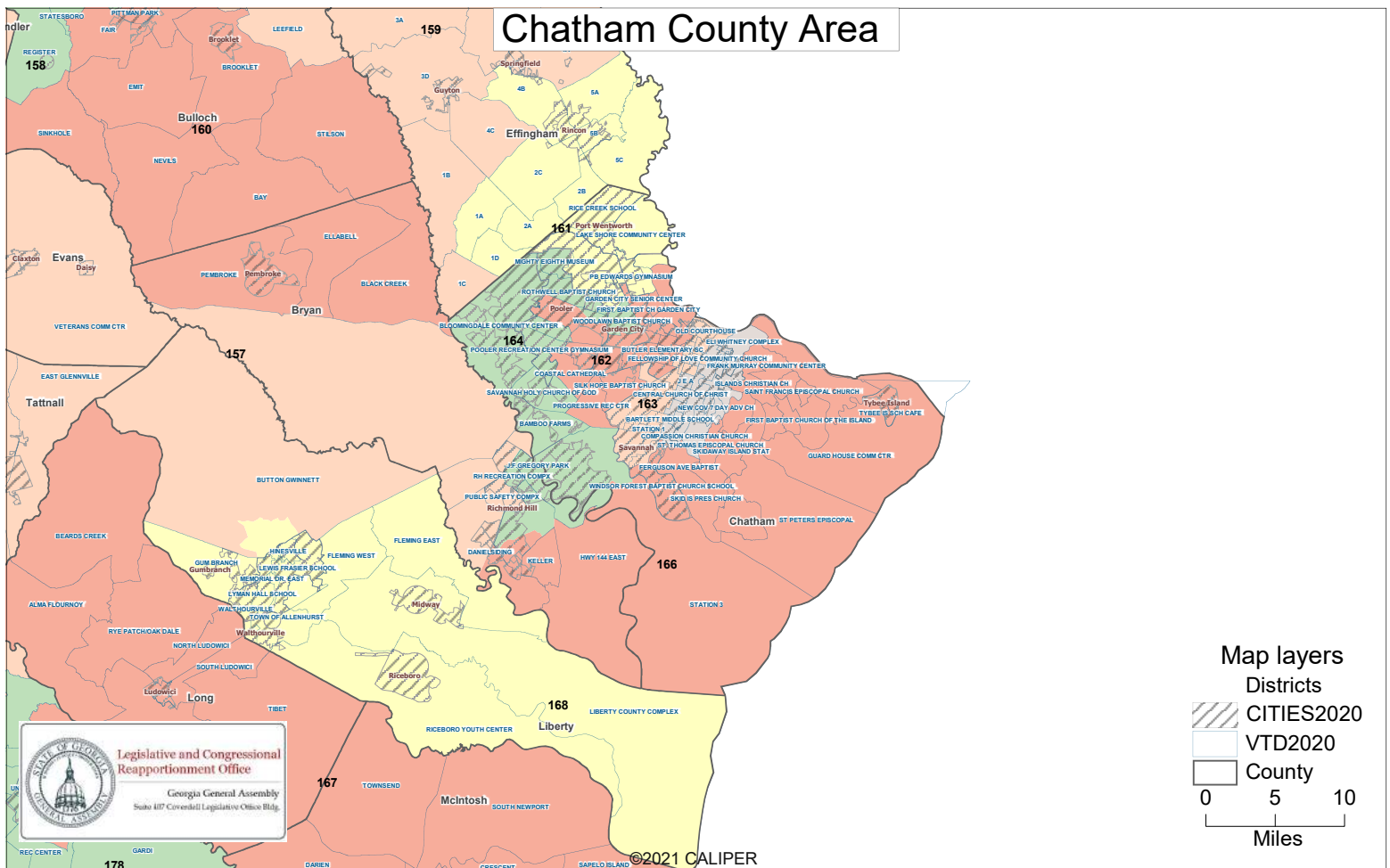
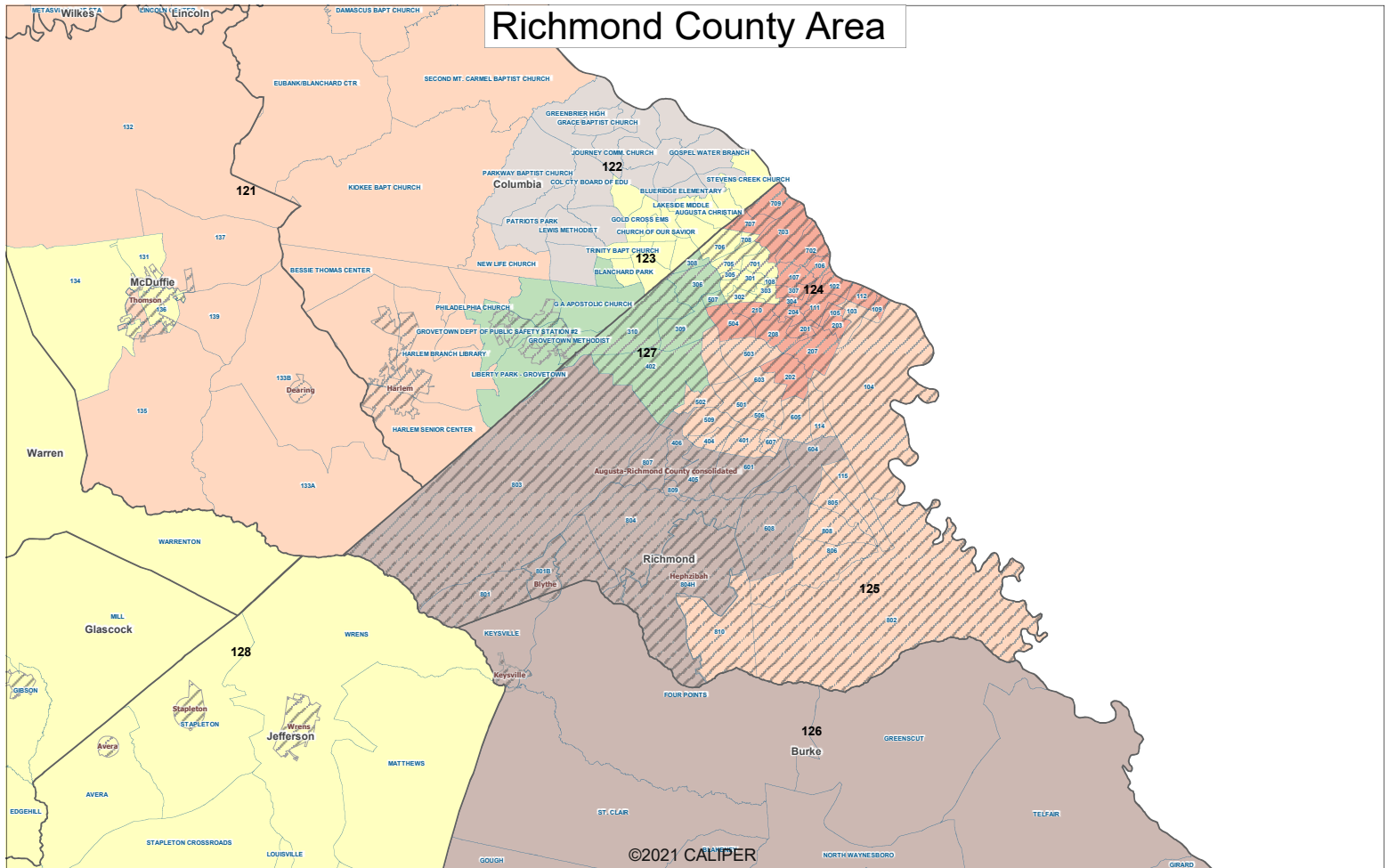
# Draft- Georgia House Districts

Client: H143  
Plan: GHDC-HousePlan-2021  
Type: House



# Draft- Georgia House Districts

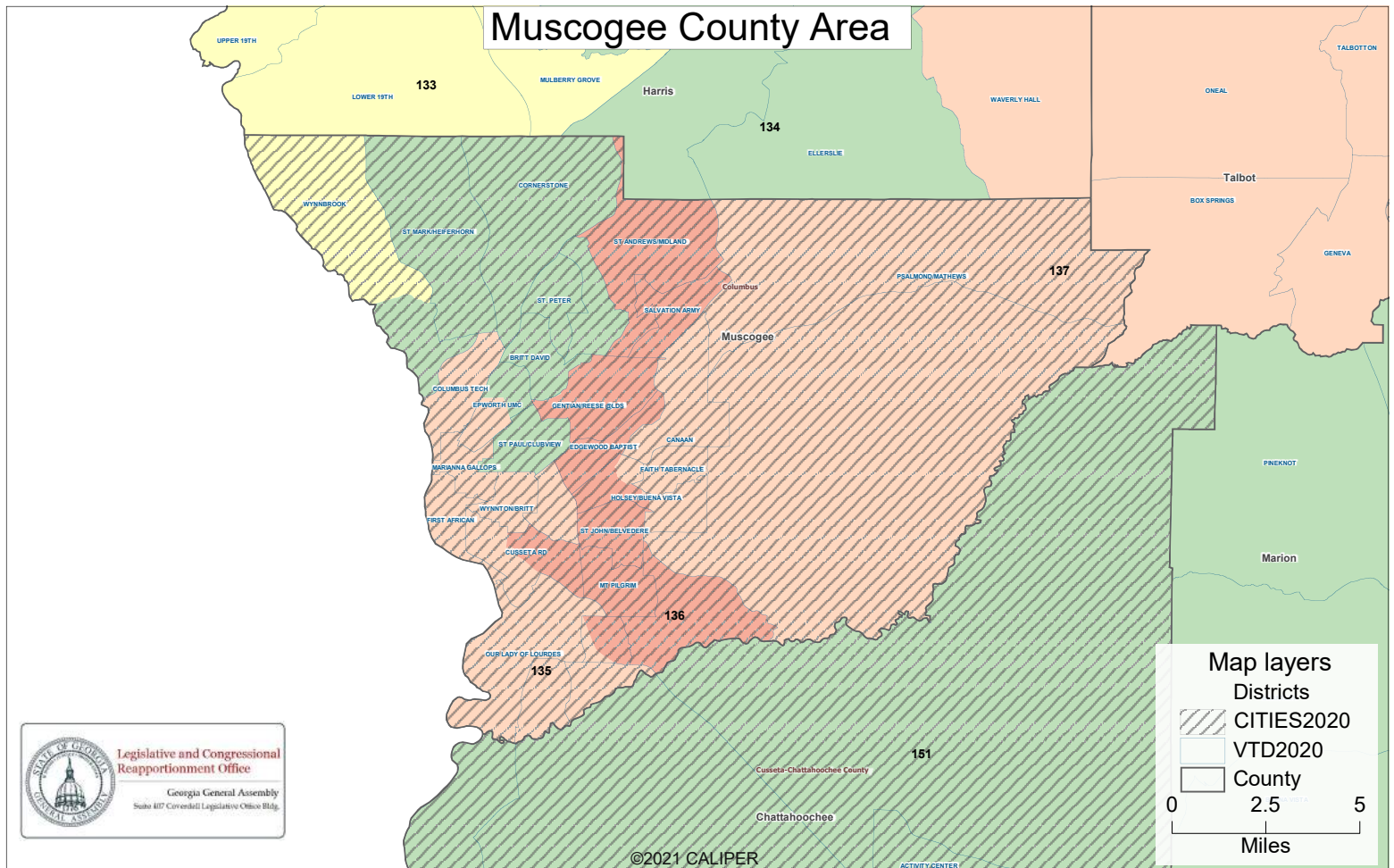
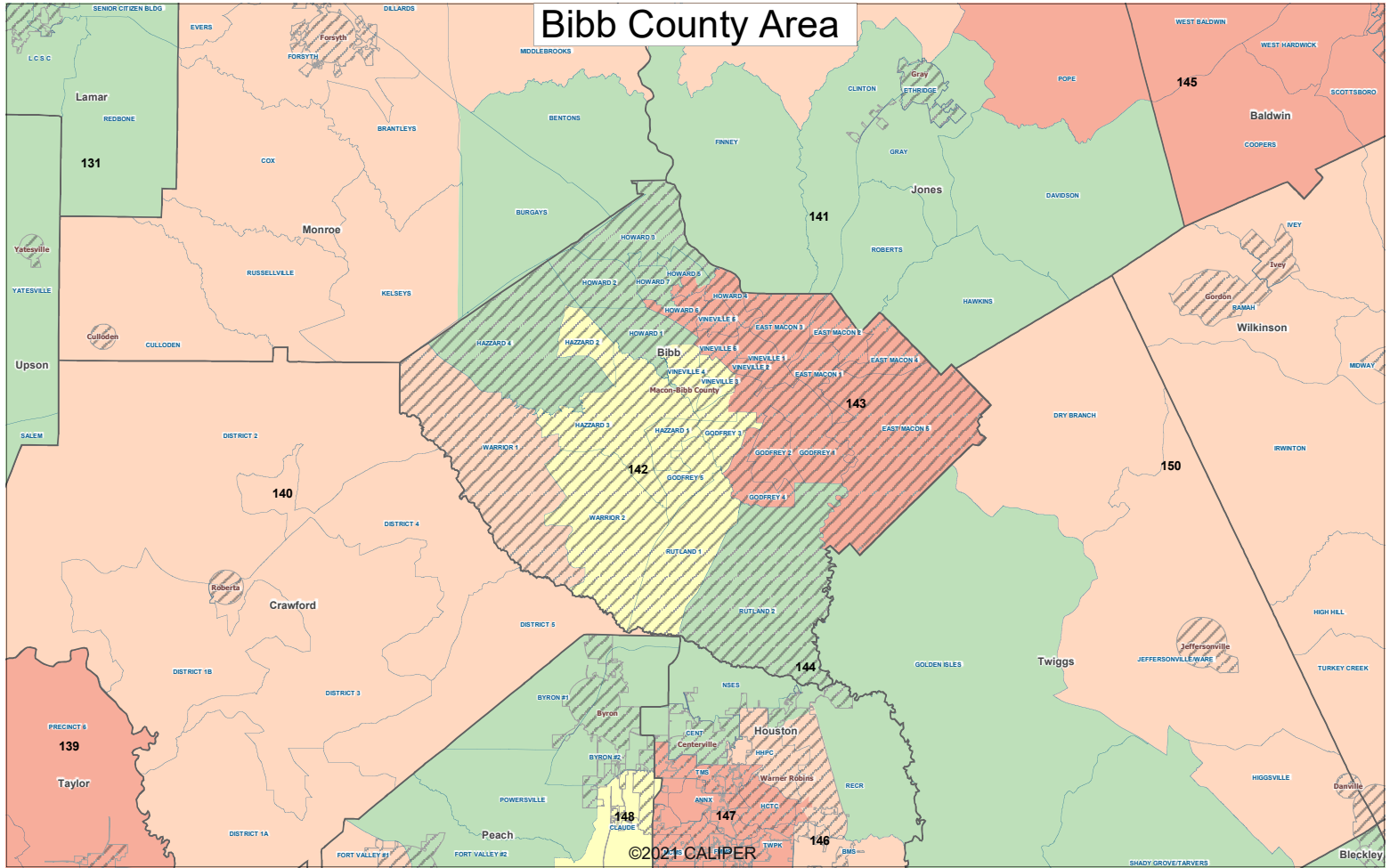
Client: H143  
Plan: GHDC-HousePlan-2021  
Type: House





# Draft- Georgia House Districts

Client: H143  
Plan: GHDC-HousePlan-2021  
Type: House



**Map layers**

- Districts
- CITIES2020
- VTD2020
- County

0 2.5 5 Miles

©2021 CALIPER



## Population Summary

Thursday, October 28, 2021

6:58 PM

### Summary Statistics:

Population Range:	58,926 to 60,024
Ratio Range:	0.02
Absolute Range:	-585 to 513
Absolute Overall Range:	1,098
Relative Range:	-0.98% to 0.86%
Relative Overall Range:	1.85%
Absolute Mean Deviation:	208.13
Relative Mean Deviation:	0.35%
Standard Deviation:	271.45

District	Population	Deviation	% Devn.	[18+ _Pop]	[% 18+ _Pop]	[% NH_Wht]	[% NH_Blkl]	[% Hispanic Origin]	[% NH_Asn]	[% NH_Ind]	[% NH_Hwn]	[% NH_Oth]	[% NH_2+ Races]
001	59,039	-472	-0.79%	46,267	78.37%	88.83%	3.24%	2.53%	0.48%	0.29%	0.04%	0.3%	4.29%
002	59,503	-8	-0.01%	43,454	73.03%	66.1%	4.61%	15.44%	8.93%	0.15%	0.03%	0.5%	4.24%
003	59,512	1	0.00%	46,186	77.61%	86.86%	2.85%	3.6%	1.64%	0.26%	0.14%	0.18%	4.47%
004	59,358	-153	-0.26%	43,879	73.92%	50.52%	4.24%	40.62%	1.69%	0.18%	0.02%	0.3%	2.43%
005	59,001	-510	-0.86%	44,384	75.23%	71.18%	3.42%	20.05%	1.12%	0.23%	0.03%	0.24%	3.73%
006	59,576	65	0.11%	44,680	75%	70.6%	1.69%	23.82%	0.73%	0.15%	0.01%	0.23%	2.78%
007	59,081	-430	-0.72%	48,771	82.55%	87.97%	0.37%	7.43%	0.45%	0.26%	0.01%	0.24%	3.27%
008	59,872	361	0.61%	50,372	84.13%	90.32%	0.7%	4.7%	0.48%	0.25%	0.01%	0.27%	3.26%
009	59,528	17	0.03%	48,155	80.89%	87.31%	1.07%	5.79%	0.82%	0.35%	0.06%	0.36%	4.24%
010	59,531	20	0.03%	46,913	78.8%	79.55%	3.38%	11.15%	1.43%	0.25%	0.05%	0.3%	3.89%
011	59,511	0	0.00%	46,785	78.62%	88.84%	1.13%	5.1%	0.56%	0.24%	0.01%	0.19%	3.93%
012	59,580	69	0.12%	46,298	77.71%	85.51%	6.01%	3.49%	0.5%	0.2%	0.02%	0.28%	3.99%
013	59,511	0	0.00%	45,375	76.25%	58.73%	19.9%	15.19%	1.82%	0.23%	0.02%	0.47%	3.63%
014	59,659	148	0.25%	46,120	77.31%	81.87%	5.94%	6.65%	0.79%	0.19%	0.03%	0.31%	4.22%
015	59,511	0	0.00%	45,764	76.9%	68.54%	13.52%	11.71%	1.17%	0.25%	0.03%	0.46%	4.31%
016	59,758	247	0.42%	45,634	76.36%	73.13%	10.38%	11.81%	0.57%	0.2%	0.04%	0.35%	3.53%
017	59,511	0	0.00%	43,434	72.98%	67%	19.56%	7.17%	0.88%	0.21%	0.07%	0.61%	4.5%
018	59,766	255	0.43%	45,710	76.48%	78.46%	10.39%	6.35%	0.61%	0.24%	0.04%	0.33%	3.59%
019	59,652	141	0.24%	43,447	72.83%	61.44%	23.91%	7.69%	1.76%	0.26%	0.08%	0.64%	4.22%
020	59,333	-178	-0.30%	45,586	76.83%	68.74%	9.03%	13.89%	2.56%	0.21%	0.03%	0.66%	4.88%
021	59,513	2	0.00%	44,643	75.01%	73.94%	8.05%	10.15%	2.38%	0.16%	0.05%	0.64%	4.63%
022	59,527	16	0.03%	45,121	75.8%	82.88%	3.55%	7.19%	1.49%	0.16%	0.04%	0.49%	4.19%
023	59,347	-164	-0.28%	45,536	76.73%	72.71%	5.66%	16.22%	0.87%	0.26%	0.03%	0.35%	3.89%
024	59,176	-335	-0.56%	41,808	70.65%	69.51%	4.16%	8.38%	13.15%	0.19%	0.04%	0.59%	3.97%
025	59,721	210	0.35%	42,035	70.39%	51.38%	5.51%	8.37%	30.57%	0.18%	0.03%	0.51%	3.44%
026	59,538	27	0.05%	44,423	74.61%	71.13%	2.3%	9.29%	13.32%	0.21%	0.04%	0.39%	3.33%
027	59,512	1	0.00%	46,884	78.78%	78.01%	3.81%	12.94%	0.96%	0.17%	0.04%	0.31%	3.76%
028	59,491	-20	-0.03%	46,345	77.9%	80.77%	7.01%	6.41%	1.31%	0.27%	0.05%	0.26%	3.93%
029	59,511	0	0.00%	43,681	73.4%	37.67%	11.4%	45.55%	2.62%	0.11%	0.07%	0.42%	2.16%

## Population Summary

GHDC-HousePlan-2021

District	Population	Deviation	% Devn.	[18+_Pop]	[% 18+_Pop]	[% NH_Wht]	[% NH_Blkl]	[% Hispanic Origin]	[% NH_Asn]	[% NH_Ind]	[% NH_Hwn]	[% NH_Oth]	[% NH 2+ Races]
030	59,320	-191	-0.32%	44,425	74.89%	54.12%	7.02%	32.9%	2.48%	0.2%	0.02%	0.33%	2.93%
031	59,485	-26	-0.04%	43,764	73.57%	77.2%	6.14%	9.48%	2.73%	0.18%	0.03%	0.39%	3.85%
032	59,568	57	0.10%	46,697	78.39%	79.95%	10.9%	4.04%	1.22%	0.16%	0.01%	0.33%	3.38%
033	60,015	504	0.85%	46,386	77.29%	72.72%	15.03%	6.95%	1.38%	0.13%	0.02%	0.3%	3.46%
034	59,443	-68	-0.11%	47,097	79.23%	59.02%	19.57%	10.11%	5.5%	0.15%	0.03%	0.96%	4.66%
035	59,720	209	0.35%	45,660	76.46%	55.17%	22.22%	12.04%	4.46%	0.24%	0.04%	0.85%	4.98%
036	59,497	-14	-0.02%	44,534	74.85%	70.94%	13.61%	6.66%	3.25%	0.08%	0.03%	0.72%	4.72%
037	59,856	345	0.58%	47,990	80.18%	45.77%	24.72%	19.07%	4.82%	0.21%	0.05%	1.02%	4.34%
038	59,652	141	0.24%	45,482	76.25%	27.18%	51.52%	14.59%	2.04%	0.19%	0.08%	0.7%	3.7%
039	59,075	-436	-0.73%	44,135	74.71%	20.79%	51.35%	22.3%	1.47%	0.15%	0.03%	0.64%	3.26%
040	59,139	-372	-0.63%	49,622	83.91%	46.3%	29.75%	8.57%	9.99%	0.18%	0.03%	0.85%	4.34%
041	59,690	179	0.30%	44,440	74.45%	26.08%	34.95%	31.87%	2.74%	0.16%	0.04%	0.88%	3.28%
042	59,523	12	0.02%	47,716	80.16%	31.71%	31.79%	26.19%	4.27%	0.19%	0.06%	1.35%	4.43%
043	59,064	-447	-0.75%	45,439	76.93%	57.68%	14.29%	8.1%	11.89%	0.18%	0.04%	2.01%	5.8%
044	59,373	-138	-0.23%	46,067	77.59%	64.12%	11.99%	10.38%	6.77%	0.18%	0.03%	1.09%	5.44%
045	59,566	55	0.09%	44,209	74.22%	74.91%	4.57%	5.97%	9.42%	0.09%	0.02%	0.66%	4.35%
046	59,546	35	0.06%	44,947	75.48%	72.93%	6.48%	10.22%	4.76%	0.11%	0.03%	0.86%	4.61%
047	58,967	-544	-0.91%	43,110	73.11%	66.71%	8.21%	6.66%	13.35%	0.15%	0.02%	0.54%	4.35%
048	59,597	86	0.14%	46,049	77.27%	54.79%	13.12%	20.27%	6.62%	0.09%	0.04%	0.84%	4.23%
049	59,674	163	0.27%	45,390	76.06%	54.72%	9.58%	8.4%	22.32%	0.17%	0.05%	0.87%	3.89%
050	58,945	-566	-0.95%	43,572	73.92%	42.39%	10.69%	6.39%	35.7%	0.08%	0.05%	0.62%	4.08%
051	59,538	27	0.05%	48,052	80.71%	53.91%	21.45%	12.17%	6.8%	0.12%	0.03%	0.91%	4.61%
052	59,618	107	0.18%	48,196	80.84%	56.26%	14.46%	13.2%	11.49%	0.13%	0.05%	0.56%	3.84%
053	59,515	4	0.01%	44,376	74.56%	26.37%	56.79%	9.17%	3.21%	0.17%	0.05%	0.56%	3.67%
054	59,916	405	0.68%	52,449	87.54%	63.37%	16.25%	7.83%	7.95%	0.18%	0.02%	0.57%	3.84%
055	59,379	-132	-0.22%	46,916	79.01%	4.9%	88.9%	2.81%	0.46%	0.17%	0.01%	0.4%	2.35%
056	59,151	-360	-0.60%	52,459	88.69%	33.78%	47.83%	5.57%	8.3%	0.18%	0.08%	0.46%	3.81%
057	59,870	359	0.60%	51,891	86.67%	44.74%	37.48%	7.67%	5.68%	0.11%	0.02%	0.56%	3.74%
058	59,724	213	0.36%	51,871	86.85%	36.17%	49.19%	5.38%	4.22%	0.19%	0.03%	0.65%	4.16%
059	59,872	361	0.61%	47,237	78.9%	33.09%	49.2%	11.13%	2.22%	0.21%	0.05%	0.45%	3.65%
060	59,485	-26	-0.04%	44,361	74.58%	8.24%	72.03%	14.68%	1.73%	0.24%	0.02%	0.53%	2.53%
061	59,865	354	0.59%	45,682	76.31%	14.27%	70.63%	10.5%	0.95%	0.2%	0.06%	0.5%	2.9%
062	59,599	88	0.15%	44,935	75.4%	32.31%	52.14%	9.7%	1.2%	0.22%	0.03%	0.64%	3.76%
063	59,936	425	0.71%	46,251	77.17%	11.44%	78.41%	5.04%	1.38%	0.22%	0.04%	0.68%	2.8%
064	59,998	487	0.82%	44,821	74.7%	5.1%	86.06%	4.8%	0.57%	0.1%	0.03%	0.76%	2.6%
065	59,415	-96	-0.16%	44,449	74.81%	10.77%	77.33%	7.9%	0.73%	0.16%	0.03%	0.51%	2.58%
066	59,054	-457	-0.77%	43,879	74.3%	30.96%	52.29%	9.69%	1.71%	0.24%	0.09%	0.82%	4.19%
067	59,367	-144	-0.24%	44,550	75.04%	64.67%	21%	7.58%	1.09%	0.26%	0.05%	0.71%	4.65%
068	59,140	-371	-0.62%	44,313	74.93%	67.24%	18.85%	7.36%	0.97%	0.25%	0.02%	0.51%	4.8%
069	59,651	140	0.24%	46,047	77.19%	66.28%	21.87%	5.86%	1.66%	0.2%	0.04%	0.28%	3.81%
070	59,322	-189	-0.32%	45,268	76.31%	72.38%	15.41%	6.4%	1.3%	0.25%	0.04%	0.39%	3.82%
071	59,203	-308	-0.52%	45,550	76.94%	65.11%	15.78%	8.57%	5.59%	0.17%	0.05%	0.54%	4.19%
072	59,984	473	0.79%	45,931	76.57%	66.69%	15.11%	7.86%	5.1%	0.14%	0.04%	0.69%	4.37%
073	59,455	-56	-0.09%	44,961	75.62%	56.73%	30.18%	6.69%	1.85%	0.2%	0.02%	0.48%	3.85%

## Population Summary

GHDC-HousePlan-2021

District	Population	Deviation	% Devn.	[18+_Pop]	[% 18+_Pop]	[% NH_Wht]	[% NH_Blkl]	[% Hispanic Origin]	[% NH_Asn]	[% NH_Ind]	[% NH_Hwn]	[% NH_Oth]	[% NH 2+ Races]
074	59,453	-58	-0.10%	44,149	74.26%	7.03%	66.99%	15.91%	7.16%	0.2%	0.04%	0.48%	2.18%
075	59,873	362	0.61%	44,777	74.79%	11.13%	69.67%	11.07%	4.26%	0.15%	0.05%	0.58%	3.09%
076	59,544	33	0.06%	45,413	76.27%	12.79%	68.5%	9.98%	4.89%	0.14%	0.05%	0.61%	3.03%
077	59,646	135	0.23%	43,403	72.77%	5.89%	70.17%	17.16%	3.37%	0.24%	0.03%	0.67%	2.48%
078	59,789	278	0.47%	45,365	75.88%	24.1%	55.36%	9.72%	6.24%	0.2%	0.07%	0.72%	3.59%
079	59,508	-3	-0.01%	45,458	76.39%	50.91%	13.09%	14.67%	16.75%	0.08%	0.04%	0.71%	3.76%
080	59,157	-354	-0.59%	47,688	80.61%	59.17%	11.3%	17.82%	7.38%	0.09%	0.03%	0.61%	3.59%
081	59,884	373	0.63%	45,348	75.73%	35.79%	10.38%	39.4%	10.76%	0.17%	0.03%	0.63%	2.84%
082	59,699	188	0.32%	48,887	81.89%	46.64%	18.22%	21.7%	8.99%	0.11%	0.02%	0.67%	3.66%
083	59,624	113	0.19%	46,307	77.67%	38.35%	50.13%	4.39%	2.51%	0.16%	0.03%	0.5%	3.93%
084	59,343	-168	-0.28%	47,225	79.58%	31.09%	55.79%	4.03%	4.42%	0.15%	0.03%	0.62%	3.88%
085	59,792	281	0.47%	46,309	77.45%	24.04%	52.16%	5.02%	13.92%	0.19%	0.03%	0.68%	3.96%
086	59,633	122	0.21%	45,637	76.53%	25.7%	55.08%	6.49%	8.62%	0.18%	0.02%	0.65%	3.26%
087	59,801	290	0.49%	46,173	77.21%	16.16%	63.4%	8.67%	7.54%	0.22%	0.02%	0.61%	3.39%
088	59,512	1	0.00%	46,477	78.1%	16.22%	64.39%	12.04%	3.03%	0.24%	0.05%	0.69%	3.33%
089	59,007	-504	-0.85%	47,155	79.91%	31.55%	57.13%	5.24%	1.61%	0.12%	0.03%	0.63%	3.7%
090	59,411	-100	-0.17%	46,508	78.28%	19.22%	71.76%	4.03%	1.1%	0.14%	0.02%	0.55%	3.17%
091	59,019	-492	-0.83%	45,395	76.92%	17.38%	71.34%	5.53%	1.52%	0.15%	0.06%	0.7%	3.31%
092	59,597	86	0.14%	44,307	74.34%	11.38%	73.52%	10.53%	0.78%	0.17%	0.06%	0.54%	3.01%
093	59,455	-56	-0.09%	44,281	74.48%	12.27%	71.46%	9.58%	2.26%	0.18%	0.03%	0.71%	3.49%
094	59,305	-206	-0.35%	44,803	75.55%	18.25%	62.87%	9.03%	5.45%	0.18%	0.03%	0.66%	3.53%
095	59,763	252	0.42%	46,128	77.18%	40.81%	22.31%	20.23%	11.85%	0.17%	0.03%	0.66%	3.93%
096	59,534	23	0.04%	45,289	76.07%	19.47%	21.88%	35.97%	18.91%	0.14%	0.06%	0.7%	2.86%
097	59,294	-217	-0.36%	42,583	71.82%	51.43%	10.08%	10.97%	22.79%	0.13%	0.03%	0.56%	4.01%
098	59,512	1	0.00%	42,682	71.72%	45.29%	26.78%	16.63%	6.49%	0.12%	0.02%	0.72%	3.95%
099	59,736	225	0.38%	42,537	71.21%	9.67%	19.55%	57.51%	10.63%	0.13%	0.05%	0.6%	1.85%
100	59,526	15	0.03%	44,064	74.02%	12.37%	28.19%	42.74%	13.28%	0.18%	0.03%	0.65%	2.56%
101	59,281	-230	-0.39%	45,347	76.49%	27.68%	24.25%	26.29%	17.54%	0.17%	0.04%	0.66%	3.37%
102	58,952	-559	-0.94%	44,877	76.12%	34.91%	28.09%	22.2%	10.28%	0.15%	0.03%	0.66%	3.68%
103	59,308	-203	-0.34%	43,664	73.62%	58.36%	12.2%	17.43%	7.71%	0.17%	0.04%	0.5%	3.6%
104	59,524	13	0.02%	43,661	73.35%	53.27%	18.52%	12.58%	10.89%	0.1%	0.03%	0.62%	3.97%
105	59,511	0	0.00%	43,243	72.66%	28.68%	41.84%	17.45%	7.17%	0.19%	0.05%	0.73%	3.88%
106	59,532	21	0.04%	44,091	74.06%	35.16%	39.22%	11.83%	8.48%	0.18%	0.04%	0.89%	4.2%
107	58,947	-564	-0.95%	43,486	73.77%	27.58%	25.87%	24.9%	17.69%	0.15%	0.04%	0.65%	3.13%
108	59,405	-106	-0.18%	44,311	74.59%	34.44%	19.3%	22.75%	19.15%	0.17%	0.04%	0.64%	3.5%
109	59,486	-25	-0.04%	44,473	74.76%	37.33%	47.1%	7.34%	2.93%	0.17%	0.06%	0.78%	4.29%
110	59,069	-442	-0.74%	44,030	74.54%	64.71%	24.68%	5.46%	0.7%	0.18%	0.02%	0.5%	3.76%
111	59,765	254	0.43%	44,383	74.26%	32.18%	51.75%	8.01%	3.23%	0.17%	0.06%	0.77%	3.83%
112	58,991	-520	-0.87%	43,954	74.51%	77.67%	12.08%	4.03%	2.69%	0.14%	0%	0.37%	3.03%
113	59,201	-310	-0.52%	43,906	74.16%	22.18%	64.78%	7.12%	1.17%	0.2%	0.13%	0.75%	3.67%
114	59,513	2	0.00%	43,502	73.1%	51.01%	31.16%	10.57%	2.41%	0.18%	0.05%	0.79%	3.83%
115	59,062	-449	-0.75%	44,162	74.77%	67.69%	18.83%	6.83%	1.89%	0.2%	0.05%	0.6%	3.91%
116	59,943	432	0.73%	45,302	75.58%	67.37%	11.91%	11.98%	3.99%	0.13%	0.02%	0.52%	4.09%
117	59,574	63	0.11%	49,997	83.92%	65.92%	14.72%	8.7%	6.2%	0.23%	0.03%	0.56%	3.63%



## Population Summary

GHDC-HousePlan-2021

District	Population	Deviation	% Devn.	[18+_Pop]	[% 18+_Pop]	[% NH_Wht]	[% NH_Blkl]	[% Hispanic Origin]	[% NH_Asn]	[% NH_Ind]	[% NH_Hwn]	[% NH_Oth]	[% NH 2+ Races]
118	59,844	333	0.56%	48,350	80.79%	48.54%	30.96%	13.93%	2.22%	0.23%	0.07%	0.87%	3.19%
119	59,891	380	0.64%	45,332	75.69%	18.36%	65.54%	9.31%	2.65%	0.19%	0.04%	0.76%	3.14%
120	59,733	222	0.37%	47,997	80.35%	64.19%	23.28%	6.81%	1.56%	0.18%	0.02%	0.51%	3.46%
121	59,591	80	0.13%	45,496	76.35%	64.81%	24.11%	5.23%	0.92%	0.27%	0.1%	0.34%	4.23%
122	59,518	7	0.01%	43,184	72.56%	67.29%	13.74%	6.24%	6.35%	0.16%	0.12%	0.64%	5.46%
123	59,698	187	0.31%	46,931	78.61%	65.5%	18.47%	5.88%	4.35%	0.19%	0.19%	0.49%	4.92%
124	59,863	352	0.59%	47,628	79.56%	34.52%	54.09%	4.86%	2.13%	0.22%	0.12%	0.43%	3.63%
125	59,863	352	0.59%	44,610	74.52%	24.83%	66.06%	4.16%	0.77%	0.25%	0.13%	0.38%	3.42%
126	59,913	402	0.68%	45,800	76.44%	38.27%	51.13%	4.95%	1.12%	0.29%	0.21%	0.39%	3.66%
127	59,769	258	0.43%	45,675	76.42%	38.61%	40.66%	10.76%	3.2%	0.28%	0.27%	0.55%	5.67%
128	59,683	172	0.29%	47,025	78.79%	39.4%	55.86%	1.98%	0.38%	0.18%	0.01%	0.14%	2.05%
129	59,049	-462	-0.78%	45,727	77.44%	68.53%	20.34%	5.83%	0.87%	0.16%	0.04%	0.42%	3.81%
130	59,518	7	0.01%	45,447	76.36%	52.17%	37.62%	5.14%	0.98%	0.2%	0.04%	0.41%	3.44%
131	59,321	-190	-0.32%	46,120	77.75%	70.74%	22.71%	2.27%	0.52%	0.17%	0.01%	0.33%	3.26%
132	59,066	-445	-0.75%	44,684	75.65%	64.82%	23.85%	5.93%	1.21%	0.23%	0.03%	0.42%	3.51%
133	59,704	193	0.32%	45,813	76.73%	61.16%	29.13%	3.89%	1.87%	0.19%	0.05%	0.37%	3.36%
134	59,263	-248	-0.42%	45,749	77.2%	64.98%	17.85%	7.36%	3.89%	0.26%	0.2%	0.57%	4.89%
135	59,511	0	0.00%	44,554	74.87%	29.02%	55.52%	9.05%	1.01%	0.27%	0.24%	0.53%	4.38%
136	59,805	294	0.49%	45,173	75.53%	31.85%	51.72%	7.81%	3.3%	0.25%	0.28%	0.5%	4.3%
137	59,758	247	0.42%	46,253	77.4%	39.35%	50.24%	5.13%	1.23%	0.17%	0.18%	0.35%	3.36%
138	59,005	-506	-0.85%	44,980	76.23%	37.97%	14.89%	10.13%	32.08%	0.16%	0.05%	0.64%	4.08%
139	59,040	-471	-0.79%	46,978	79.57%	36.64%	54.92%	5.02%	1.23%	0.15%	0.03%	0.18%	1.83%
140	59,386	-125	-0.21%	46,873	78.93%	63.82%	28.15%	3.69%	0.51%	0.19%	0.02%	0.41%	3.21%
141	59,321	-190	-0.32%	46,459	78.32%	65.61%	24.79%	3.01%	3.29%	0.18%	0.02%	0.28%	2.81%
142	59,511	0	0.00%	44,230	74.32%	26.6%	64.75%	4.3%	1.24%	0.19%	0.01%	0.38%	2.53%
143	59,559	48	0.08%	46,340	77.81%	30.32%	60.7%	4.21%	1.11%	0.16%	0.05%	0.39%	3.05%
144	59,288	-223	-0.37%	46,102	77.76%	57.14%	30.49%	6.81%	1.5%	0.24%	0.05%	0.38%	3.38%
145	59,509	-2	0.00%	48,770	81.95%	59.28%	33.54%	2.98%	1.13%	0.15%	0.05%	0.38%	2.5%
146	59,511	0	0.00%	43,599	73.26%	48.97%	35.37%	8.16%	1.89%	0.21%	0.09%	0.41%	4.89%
147	59,511	0	0.00%	44,543	74.85%	52.53%	29.25%	7.75%	4.92%	0.19%	0.07%	0.46%	4.83%
148	59,593	82	0.14%	46,187	77.5%	57.79%	34.16%	3.66%	1.07%	0.1%	0.04%	0.35%	2.84%
149	59,595	84	0.14%	48,294	81.04%	68.39%	14.79%	7.14%	5.04%	0.11%	0.04%	0.54%	3.95%
150	60,003	492	0.83%	46,315	77.19%	55.16%	38.21%	2.52%	0.91%	0.19%	0.03%	0.23%	2.73%
151	58,926	-585	-0.98%	46,152	78.32%	49.28%	38.37%	7.45%	1.14%	0.22%	0.23%	0.25%	3.06%
152	59,511	0	0.00%	45,482	76.43%	68.73%	22.94%	3.11%	1.76%	0.19%	0.03%	0.27%	2.97%
153	58,998	-513	-0.86%	45,796	77.62%	31.31%	62.06%	2.79%	1.07%	0.13%	0.02%	0.25%	2.37%
154	58,998	-513	-0.86%	46,182	78.28%	30.27%	64.17%	2.68%	0.32%	0.15%	0.01%	0.22%	2.17%
155	59,639	128	0.22%	46,995	78.8%	57.21%	32.32%	7.32%	0.61%	0.18%	0%	0.2%	2.15%
156	59,163	-348	-0.58%	45,238	76.46%	63.63%	25.38%	7.48%	0.55%	0.14%	0.02%	0.28%	2.51%
157	59,971	460	0.77%	44,596	74.36%	59.25%	24.47%	11.32%	1.1%	0.19%	0.1%	0.29%	3.27%
158	60,024	513	0.86%	46,915	78.16%	58.01%	35.01%	3.63%	0.58%	0.2%	0.05%	0.25%	2.26%
159	59,374	-137	-0.23%	44,636	75.18%	66.79%	24.91%	3.46%	0.6%	0.27%	0.03%	0.31%	3.63%
160	59,127	-384	-0.65%	47,516	80.36%	66.56%	21.92%	5.53%	1.64%	0.24%	0.1%	0.29%	3.72%
161	59,542	31	0.05%	43,912	73.75%	59.78%	24.62%	7.69%	2.23%	0.22%	0.08%	0.52%	4.88%

## Population Summary

GHDC-HousePlan-2021

District	Population	Deviation	% Devn.	[18+ _Pop]	[% 18+ _Pop]	[% NH_Wht]	[% NH_Blkl]	[% Hispanic Origin]	[% NH_Asn]	[% NH_Ind]	[% NH_Hwn]	[% NH_Oth]	[% NH 2+ Races]
162	59,400	-111	-0.19%	46,399	78.11%	30.25%	50.77%	11.24%	3.94%	0.25%	0.12%	0.41%	3.02%
163	59,505	-6	-0.01%	48,273	81.12%	39.95%	44.12%	7.59%	3.82%	0.19%	0.17%	0.53%	3.63%
164	59,756	245	0.41%	45,544	76.22%	52.84%	26.36%	10.12%	4.62%	0.28%	0.13%	0.62%	5.03%
165	59,590	79	0.13%	47,573	79.83%	42.98%	44.08%	5.7%	2.82%	0.17%	0.22%	0.42%	3.61%
166	59,913	402	0.68%	47,251	78.87%	82.88%	4.93%	5.18%	2.56%	0.16%	0.05%	0.38%	3.85%
167	59,838	327	0.55%	45,680	76.34%	60.39%	24.39%	8.38%	1.39%	0.32%	0.22%	0.51%	4.4%
168	59,508	-3	-0.01%	44,490	74.76%	35.93%	43.53%	11.22%	2.01%	0.32%	0.68%	0.48%	5.82%
169	59,955	444	0.75%	45,452	75.81%	56.8%	27.22%	12.48%	0.58%	0.14%	0.03%	0.17%	2.58%
170	59,961	450	0.76%	45,226	75.43%	62.65%	23.85%	8.94%	1.04%	0.15%	0.03%	0.27%	3.07%
171	59,339	-172	-0.29%	45,756	77.11%	51.45%	39.13%	6.29%	0.58%	0.2%	0.03%	0.2%	2.11%
172	59,591	80	0.13%	44,559	74.77%	54.17%	26%	16.33%	0.77%	0.24%	0.02%	0.25%	2.23%
173	59,442	-69	-0.12%	45,211	76.06%	54.26%	34.16%	7.37%	0.8%	0.28%	0.03%	0.31%	2.8%
174	59,508	-3	-0.01%	44,000	73.94%	58.54%	28.12%	7.32%	1.23%	0.35%	0.12%	0.35%	3.98%
175	59,650	139	0.23%	45,012	75.46%	66.55%	22.53%	5.9%	1.2%	0.28%	0.04%	0.26%	3.24%
176	59,710	199	0.33%	45,869	76.82%	78.5%	11.29%	6.17%	0.35%	0.26%	0.03%	0.25%	3.15%
177	59,509	-2	0.00%	45,676	76.75%	34.14%	53.67%	6.59%	1.51%	0.18%	0.08%	0.43%	3.41%
178	59,747	236	0.40%	44,977	75.28%	74.03%	14.97%	7.38%	0.5%	0.16%	0.02%	0.27%	2.69%
179	59,910	399	0.67%	47,497	79.28%	62.36%	25.96%	6.92%	1.04%	0.16%	0.08%	0.37%	3.11%
180	59,228	-283	-0.48%	45,588	76.97%	65.13%	17.85%	9.32%	1.59%	0.34%	0.1%	0.56%	5.12%

**Total: 10,711,908**

**Ideal District: 59,511**

## Population Summary

Thursday, October 28, 2021

7:21 PM

### Summary Statistics:

Population Range:	58,926 to 60,024
Ratio Range:	0.02
Absolute Range:	-585 to 513
Absolute Overall Range:	1,098
Relative Range:	-0.98% to 0.86%
Relative Overall Range:	1.85%
Absolute Mean Deviation:	208.13
Relative Mean Deviation:	0.35%
Standard Deviation:	271.45

District	Population	Deviation	% Devn.	[18+ _Pop]	[% 18+ _Pop]	[% NH18+ _Wht]	[% NH18+ _Blk]	[% H18+ _Pop]	[% NH18+ _Ind]	[% NH18+ _Asn]	[% NH18+ _Hwn]	[% NH18+ _Oth]	[% NH18+ 2 + Races]
001	59,039	-472	-0.79%	46,267	78.37%	90.27%	3.02%	2.01%	0.32%	0.51%	0.04%	0.25%	3.59%
002	59,503	-8	-0.01%	43,454	73.03%	69.6%	4.42%	13.5%	0.16%	8.21%	0.03%	0.42%	3.65%
003	59,512	1	0.00%	46,186	77.61%	88.43%	2.73%	2.96%	0.26%	1.57%	0.14%	0.14%	3.77%
004	59,358	-153	-0.26%	43,879	73.92%	55.92%	4.48%	35.31%	0.18%	1.73%	0.02%	0.22%	2.14%
005	59,001	-510	-0.86%	44,384	75.23%	74.7%	3.56%	16.74%	0.26%	1.16%	0.03%	0.23%	3.32%
006	59,576	65	0.11%	44,680	75%	74.83%	1.69%	19.96%	0.19%	0.71%	0.01%	0.19%	2.42%
007	59,081	-430	-0.72%	48,771	82.55%	90.15%	0.34%	5.53%	0.27%	0.46%	0.01%	0.21%	3.02%
008	59,872	361	0.61%	50,372	84.13%	91.7%	0.69%	3.79%	0.24%	0.49%	0%	0.23%	2.85%
009	59,528	17	0.03%	48,155	80.89%	88.48%	1.1%	5%	0.39%	0.89%	0.06%	0.32%	3.76%
010	59,531	20	0.03%	46,913	78.8%	82.28%	3.64%	8.63%	0.26%	1.48%	0.03%	0.29%	3.38%
011	59,511	0	0.00%	46,785	78.62%	90.43%	1.11%	3.97%	0.27%	0.56%	0.02%	0.18%	3.47%
012	59,580	69	0.12%	46,298	77.71%	86.6%	6.56%	2.73%	0.22%	0.5%	0.02%	0.16%	3.2%
013	59,511	0	0.00%	45,375	76.25%	63.06%	19.07%	12.44%	0.23%	1.9%	0.01%	0.38%	2.91%
014	59,659	148	0.25%	46,120	77.31%	83.54%	6.16%	5.47%	0.22%	0.81%	0.02%	0.32%	3.46%
015	59,511	0	0.00%	45,764	76.9%	71.95%	13.16%	9.64%	0.27%	1.22%	0.02%	0.32%	3.43%
016	59,758	247	0.42%	45,634	76.36%	76.87%	10.09%	9.12%	0.19%	0.59%	0.04%	0.27%	2.85%
017	59,511	0	0.00%	43,434	72.98%	69.86%	18.77%	6.13%	0.23%	0.92%	0.06%	0.48%	3.55%
018	59,766	255	0.43%	45,710	76.48%	80.06%	10.52%	5.31%	0.26%	0.63%	0.03%	0.25%	2.94%
019	59,652	141	0.24%	43,447	72.83%	64.02%	23.06%	6.84%	0.23%	1.85%	0.08%	0.52%	3.42%
020	59,333	-178	-0.30%	45,586	76.83%	71.85%	8.55%	12.07%	0.2%	2.63%	0.03%	0.57%	4.12%
021	59,513	2	0.00%	44,643	75.01%	76.13%	7.93%	8.92%	0.18%	2.45%	0.07%	0.61%	3.71%
022	59,527	16	0.03%	45,121	75.8%	84.67%	3.5%	6.26%	0.18%	1.49%	0.04%	0.42%	3.42%
023	59,347	-164	-0.28%	45,536	76.73%	76.72%	5.41%	13.15%	0.25%	0.95%	0.04%	0.28%	3.21%
024	59,176	-335	-0.56%	41,808	70.65%	72.7%	4.05%	7.43%	0.14%	12.17%	0.06%	0.55%	2.91%
025	59,721	210	0.35%	42,035	70.39%	55.67%	5.61%	7.79%	0.13%	27.55%	0.04%	0.49%	2.73%
026	59,538	27	0.05%	44,423	74.61%	75.17%	2.15%	8.1%	0.17%	11.19%	0.02%	0.34%	2.85%
027	59,512	1	0.00%	46,884	78.78%	81.12%	3.6%	10.64%	0.17%	0.97%	0.04%	0.26%	3.2%
028	59,491	-20	-0.03%	46,345	77.9%	83.11%	6.95%	5.06%	0.3%	1.29%	0.05%	0.2%	3.04%



## Population Summary

GHDC-HousePlan-2021

District	Population	Deviation	% Devn.	[18+_Pop]	[% 18+_Pop]	[% NH18+_Wht]	[% NH18+_Blk]	[% H18+_Pop]	[% NH18+_Ind]	[% NH18+_Asn]	[% NH18+_Hwn]	[% NH18+_Oth]	[% NH18+_ 2 + Races]
029	59,511	0	0.00%	43,681	73.4%	44.16%	11.72%	38.81%	0.13%	2.88%	0.06%	0.33%	1.9%
030	59,320	-191	-0.32%	44,425	74.89%	59.1%	7.22%	28.05%	0.2%	2.56%	0.03%	0.29%	2.54%
031	59,485	-26	-0.04%	43,764	73.57%	79.1%	6.17%	8.37%	0.21%	2.73%	0.04%	0.31%	3.07%
032	59,568	57	0.10%	46,697	78.39%	82.19%	10.56%	3.16%	0.17%	1.18%	0.01%	0.28%	2.46%
033	60,015	504	0.85%	46,386	77.29%	75.06%	14.77%	5.65%	0.17%	1.36%	0.02%	0.21%	2.76%
034	59,443	-68	-0.11%	47,097	79.23%	61.94%	18.87%	8.79%	0.16%	5.48%	0.03%	0.83%	3.89%
035	59,720	209	0.35%	45,660	76.46%	58.43%	21.37%	10.71%	0.22%	4.68%	0.04%	0.75%	3.8%
036	59,497	-14	-0.02%	44,534	74.85%	73.62%	13.12%	5.8%	0.08%	3.2%	0.03%	0.62%	3.53%
037	59,856	345	0.58%	47,990	80.18%	49.24%	24.89%	16.25%	0.2%	4.83%	0.04%	0.95%	3.61%
038	59,652	141	0.24%	45,482	76.25%	31.36%	49.97%	12.41%	0.22%	2.16%	0.06%	0.62%	3.19%
039	59,075	-436	-0.73%	44,135	74.71%	23.77%	51.74%	19.09%	0.18%	1.74%	0.03%	0.6%	2.84%
040	59,139	-372	-0.63%	49,622	83.91%	48.91%	29.03%	7.69%	0.18%	9.69%	0.02%	0.81%	3.67%
041	59,690	179	0.30%	44,440	74.45%	29.97%	35.47%	27.63%	0.19%	3.02%	0.03%	0.86%	2.82%
042	59,523	12	0.02%	47,716	80.16%	35.45%	31.79%	22.54%	0.21%	4.58%	0.06%	1.3%	4.08%
043	59,064	-447	-0.75%	45,439	76.93%	60.23%	14.25%	7.22%	0.18%	11.19%	0.04%	1.92%	4.98%
044	59,373	-138	-0.23%	46,067	77.59%	66.89%	11.57%	9.14%	0.18%	6.8%	0.03%	1.03%	4.36%
045	59,566	55	0.09%	44,209	74.22%	77.15%	4.66%	5.35%	0.08%	8.92%	0.02%	0.55%	3.25%
046	59,546	35	0.06%	44,947	75.48%	75.38%	6.54%	9.02%	0.13%	4.65%	0.04%	0.69%	3.56%
047	58,967	-544	-0.91%	43,110	73.11%	68.35%	8.23%	6.34%	0.14%	13.01%	0.02%	0.51%	3.41%
048	59,597	86	0.14%	46,049	77.27%	58.44%	13.05%	17.5%	0.09%	6.39%	0.05%	0.77%	3.72%
049	59,674	163	0.27%	45,390	76.06%	58.14%	9.46%	7.69%	0.14%	20.64%	0.04%	0.74%	3.15%
050	58,945	-566	-0.95%	43,572	73.92%	45.18%	10.42%	5.74%	0.07%	34.93%	0.05%	0.54%	3.08%
051	59,538	27	0.05%	48,052	80.71%	56.59%	20.91%	10.7%	0.13%	6.85%	0.04%	0.88%	3.89%
052	59,618	107	0.18%	48,196	80.84%	58.1%	14.9%	11.42%	0.12%	11.49%	0.05%	0.52%	3.39%
053	59,515	4	0.01%	44,376	74.56%	28.56%	56.15%	8.07%	0.16%	3.36%	0.05%	0.49%	3.15%
054	59,916	405	0.68%	52,449	87.54%	63.85%	16.84%	7.19%	0.16%	8.25%	0.02%	0.51%	3.18%
055	59,379	-132	-0.22%	46,916	79.01%	5.65%	88.48%	2.5%	0.16%	0.51%	0.01%	0.42%	2.28%
056	59,151	-360	-0.60%	52,459	88.69%	36.49%	44.84%	5.52%	0.19%	8.81%	0.09%	0.42%	3.64%
057	59,870	359	0.60%	51,891	86.67%	46.25%	36.64%	7.27%	0.1%	6.08%	0.02%	0.5%	3.14%
058	59,724	213	0.36%	51,871	86.85%	39.29%	45.94%	5.48%	0.19%	4.58%	0.03%	0.63%	3.85%
059	59,872	361	0.61%	47,237	78.9%	36.4%	47.2%	9.87%	0.2%	2.55%	0.06%	0.42%	3.31%
060	59,485	-26	-0.04%	44,361	74.58%	9.91%	72.34%	12.77%	0.25%	1.96%	0.03%	0.49%	2.26%
061	59,865	354	0.59%	45,682	76.31%	16.23%	70.63%	8.78%	0.2%	1.05%	0.05%	0.48%	2.57%
062	59,599	88	0.15%	44,935	75.4%	35.82%	50.75%	8.29%	0.23%	1.26%	0.03%	0.53%	3.08%
063	59,936	425	0.71%	46,251	77.17%	13.18%	77.82%	4.28%	0.21%	1.43%	0.05%	0.6%	2.43%
064	60,007	496	0.83%	44,827	74.7%	5.98%	85.99%	4.23%	0.09%	0.64%	0.04%	0.66%	2.37%
065	59,415	-96	-0.16%	44,449	74.81%	12.71%	76.16%	7.08%	0.19%	0.84%	0.02%	0.53%	2.46%
066	59,054	-457	-0.77%	43,879	74.3%	34.45%	50.84%	8.38%	0.26%	1.88%	0.09%	0.67%	3.42%
067	59,367	-144	-0.24%	44,550	75.04%	67.52%	20.36%	6.28%	0.29%	1.16%	0.05%	0.62%	3.71%
068	59,140	-371	-0.62%	44,313	74.93%	69.88%	18.42%	6.12%	0.24%	1.01%	0.02%	0.43%	3.88%
069	59,651	140	0.24%	46,047	77.19%	68.5%	21.6%	4.88%	0.18%	1.62%	0.05%	0.22%	2.94%
070	59,322	-189	-0.32%	45,268	76.31%	74.14%	15.25%	5.49%	0.28%	1.32%	0.04%	0.31%	3.16%
071	59,203	-308	-0.52%	45,550	76.94%	67.58%	15.24%	7.75%	0.15%	5.44%	0.06%	0.43%	3.35%

## Population Summary

GHDC-HousePlan-2021

District	Population	Deviation	% Devn.	[18+ _Pop]	[% 18+ _Pop]	[% NH18+ _Wht]	[% NH18+ _Blk]	[% H18+ _Pop]	[% NH18+ _Ind]	[% NH18+ _Asn]	[% NH18+ _Hwn]	[% NH18+ _Oth]	[% NH18+ 2 + Races]
072	59,975	464	0.78%	45,925	76.57%	69.68%	14.59%	6.73%	0.13%	4.8%	0.03%	0.56%	3.47%
073	59,455	-56	-0.09%	44,961	75.62%	60.06%	28.72%	5.58%	0.21%	1.85%	0.02%	0.45%	3.12%
074	59,453	-58	-0.10%	44,149	74.26%	8.6%	67.27%	13.89%	0.21%	7.71%	0.05%	0.43%	1.85%
075	59,873	362	0.61%	44,777	74.79%	13.51%	68.66%	9.8%	0.16%	4.56%	0.05%	0.54%	2.72%
076	59,544	33	0.06%	45,413	76.27%	14.89%	68.23%	8.37%	0.16%	5.09%	0.06%	0.56%	2.64%
077	59,646	135	0.23%	43,403	72.77%	7.34%	70.79%	14.91%	0.21%	3.84%	0.03%	0.64%	2.24%
078	59,789	278	0.47%	45,365	75.88%	27.41%	53.83%	8.61%	0.21%	6.32%	0.08%	0.62%	2.93%
079	59,508	-3	-0.01%	45,458	76.39%	52.89%	13.91%	12.87%	0.05%	16.46%	0.05%	0.69%	3.09%
080	59,157	-354	-0.59%	47,688	80.61%	61.45%	12.27%	14.75%	0.1%	7.89%	0.03%	0.56%	2.94%
081	59,884	373	0.63%	45,348	75.73%	39.11%	11.03%	34.92%	0.18%	11.81%	0.02%	0.54%	2.39%
082	59,699	188	0.32%	48,887	81.89%	48.51%	19.9%	18.28%	0.1%	9.58%	0.03%	0.54%	3.07%
083	59,624	113	0.19%	46,307	77.67%	39.35%	50.06%	4.05%	0.16%	2.79%	0.04%	0.42%	3.15%
084	59,343	-168	-0.28%	47,225	79.58%	32.38%	55.53%	3.55%	0.16%	4.6%	0.03%	0.6%	3.16%
085	59,792	281	0.47%	46,309	77.45%	26.79%	52.2%	4.56%	0.16%	12.3%	0.03%	0.57%	3.4%
086	59,633	122	0.21%	45,637	76.53%	28.13%	54.04%	6.37%	0.17%	7.9%	0.01%	0.56%	2.81%
087	59,801	290	0.49%	46,173	77.21%	18.48%	62.94%	7.5%	0.23%	7.32%	0.02%	0.58%	2.94%
088	59,512	1	0.00%	46,477	78.1%	18.41%	64.16%	10.39%	0.23%	3.13%	0.06%	0.64%	3%
089	59,007	-504	-0.85%	47,155	79.91%	33.5%	56.13%	4.66%	0.11%	1.87%	0.03%	0.54%	3.15%
090	59,411	-100	-0.17%	46,508	78.28%	20.67%	71.27%	3.39%	0.12%	1.13%	0.01%	0.51%	2.89%
091	59,019	-492	-0.83%	45,395	76.92%	20.19%	69.66%	4.75%	0.16%	1.61%	0.07%	0.57%	2.99%
092	59,597	86	0.14%	44,307	74.34%	13.4%	73.3%	9.01%	0.17%	0.87%	0.05%	0.48%	2.73%
093	59,455	-56	-0.09%	44,281	74.48%	14.5%	70.94%	8.09%	0.19%	2.41%	0.02%	0.65%	3.2%
094	59,305	-206	-0.35%	44,803	75.55%	20.58%	62.36%	7.62%	0.18%	5.44%	0.03%	0.61%	3.17%
095	59,763	252	0.42%	46,128	77.18%	43.66%	21.88%	17.58%	0.17%	12.84%	0.03%	0.59%	3.25%
096	59,534	23	0.04%	45,289	76.07%	22.29%	21.59%	31.91%	0.12%	20.97%	0.05%	0.59%	2.48%
097	59,294	-217	-0.36%	42,583	71.82%	54.36%	9.79%	10.13%	0.12%	22.19%	0.04%	0.41%	2.96%
098	59,512	1	0.00%	42,682	71.72%	48.4%	25.81%	15.17%	0.13%	6.7%	0.02%	0.63%	3.15%
099	59,736	225	0.38%	42,537	71.21%	11.65%	20.9%	52.86%	0.12%	12.2%	0.05%	0.52%	1.7%
100	59,526	15	0.03%	44,064	74.02%	14.44%	28.71%	38.92%	0.17%	14.76%	0.03%	0.54%	2.41%
101	59,281	-230	-0.39%	45,347	76.49%	30.71%	23.41%	23.61%	0.18%	18.74%	0.05%	0.59%	2.71%
102	58,952	-559	-0.94%	44,877	76.12%	38.88%	26.9%	19.97%	0.13%	10.8%	0.03%	0.5%	2.79%
103	59,308	-203	-0.34%	43,664	73.62%	61.27%	12.33%	15.13%	0.2%	7.88%	0.03%	0.42%	2.74%
104	59,524	13	0.02%	43,661	73.35%	55.67%	17.81%	11.52%	0.12%	11.33%	0.03%	0.46%	3.06%
105	59,511	0	0.00%	43,243	72.66%	32.08%	40.23%	15.92%	0.14%	7.6%	0.05%	0.59%	3.38%
106	59,532	21	0.04%	44,091	74.06%	39.62%	37.21%	10.44%	0.19%	8.42%	0.03%	0.78%	3.32%
107	58,947	-564	-0.95%	43,486	73.77%	30.5%	25.05%	22.62%	0.16%	18.66%	0.05%	0.53%	2.42%
108	59,405	-106	-0.18%	44,311	74.59%	38.42%	18.55%	19.94%	0.18%	19.63%	0.05%	0.53%	2.7%
109	59,486	-25	-0.04%	44,473	74.76%	40.42%	45.79%	6.39%	0.19%	2.91%	0.06%	0.7%	3.53%
110	59,069	-442	-0.74%	44,030	74.54%	66.78%	24.36%	4.55%	0.18%	0.71%	0.02%	0.42%	2.99%
111	59,765	254	0.43%	44,383	74.26%	35.3%	50.16%	7.16%	0.18%	3.39%	0.06%	0.66%	3.09%
112	58,991	-520	-0.87%	43,954	74.51%	78.96%	12.48%	3.25%	0.15%	2.42%	0%	0.3%	2.45%
113	59,201	-310	-0.52%	43,906	74.16%	24.93%	63.6%	6.04%	0.22%	1.23%	0.12%	0.75%	3.11%
114	59,513	2	0.00%	43,502	73.1%	55.05%	29.35%	9.05%	0.21%	2.43%	0.06%	0.73%	3.11%

## Population Summary

GHDC-HousePlan-2021

District	Population	Deviation	% Devn.	[18+ _Pop]	[% 18+ _Pop]	[% NH18+ _Wht]	[% NH18+ _Blk]	[% H18+ _Pop]	[% NH18+ _Ind]	[% NH18+ _Asn]	[% NH18+ _Hwn]	[% NH18+ _Oth]	[% NH18+ 2 + Races]
115	59,062	-449	-0.75%	44,162	74.77%	70.23%	18.24%	5.84%	0.23%	1.9%	0.02%	0.51%	3.02%
116	59,943	432	0.73%	45,302	75.58%	70.42%	11.75%	10%	0.13%	3.99%	0.02%	0.41%	3.29%
117	59,574	63	0.11%	49,997	83.92%	68.2%	13.77%	7.65%	0.22%	6.39%	0.03%	0.5%	3.24%
118	59,844	333	0.56%	48,350	80.79%	53.73%	28.04%	11.81%	0.25%	2.51%	0.07%	0.8%	2.8%
119	59,891	380	0.64%	45,332	75.69%	21.21%	64.25%	8.06%	0.2%	2.88%	0.03%	0.75%	2.61%
120	59,733	222	0.37%	47,997	80.35%	67.43%	21.8%	5.62%	0.19%	1.53%	0.01%	0.45%	2.96%
121	59,591	80	0.13%	45,496	76.35%	67.17%	23.84%	4.13%	0.31%	0.99%	0.07%	0.29%	3.22%
122	59,518	7	0.01%	43,184	72.56%	69.34%	13.98%	5.26%	0.17%	6.6%	0.09%	0.56%	4.01%
123	59,698	187	0.31%	46,931	78.61%	67.97%	17.93%	4.99%	0.19%	4.47%	0.17%	0.42%	3.85%
124	59,863	352	0.59%	47,628	79.56%	38.16%	51.23%	4.34%	0.2%	2.43%	0.12%	0.43%	3.09%
125	59,863	352	0.59%	44,610	74.52%	27.67%	64.11%	3.77%	0.24%	0.93%	0.14%	0.32%	2.82%
126	59,913	402	0.68%	45,800	76.44%	40.66%	49.49%	4.6%	0.34%	1.35%	0.23%	0.3%	3.02%
127	59,769	258	0.43%	45,675	76.42%	41.4%	39.51%	10.13%	0.28%	3.62%	0.24%	0.4%	4.43%
128	59,683	172	0.29%	47,025	78.79%	41.49%	54.52%	1.67%	0.18%	0.4%	0%	0.12%	1.62%
129	59,049	-462	-0.78%	45,727	77.44%	70.57%	19.92%	4.79%	0.17%	0.94%	0.01%	0.35%	3.25%
130	59,518	7	0.01%	45,447	76.36%	55.76%	35.46%	4.39%	0.21%	1.04%	0.04%	0.33%	2.76%
131	59,321	-190	-0.32%	46,120	77.75%	71.79%	22.78%	1.87%	0.17%	0.56%	0%	0.25%	2.58%
132	59,066	-445	-0.75%	44,684	75.65%	67.03%	23.26%	5.02%	0.26%	1.21%	0.04%	0.3%	2.88%
133	59,704	193	0.32%	45,813	76.73%	63.62%	28.19%	3.13%	0.19%	1.97%	0.05%	0.3%	2.55%
134	59,263	-248	-0.42%	45,749	77.2%	67.69%	17.12%	6.42%	0.28%	3.78%	0.24%	0.48%	3.99%
135	59,511	0	0.00%	44,554	74.87%	32.01%	54.44%	8.02%	0.23%	1.16%	0.2%	0.49%	3.46%
136	59,805	294	0.49%	45,173	75.53%	34.2%	51.62%	6.44%	0.26%	3.4%	0.27%	0.39%	3.42%
137	59,758	247	0.42%	46,253	77.4%	41.81%	49.07%	4.52%	0.17%	1.33%	0.18%	0.27%	2.65%
138	59,005	-506	-0.85%	44,980	76.23%	40.44%	14.35%	9.19%	0.14%	32.23%	0.06%	0.54%	3.06%
139	59,040	-471	-0.79%	46,978	79.57%	38.82%	54.06%	4.05%	0.15%	1.22%	0.02%	0.16%	1.54%
140	59,386	-125	-0.21%	46,873	78.93%	64.52%	28.65%	3.16%	0.22%	0.57%	0.01%	0.27%	2.59%
141	59,321	-190	-0.32%	46,459	78.32%	67.33%	24.04%	2.79%	0.2%	3.24%	0.01%	0.24%	2.16%
142	59,511	0	0.00%	44,230	74.32%	30.28%	62.25%	3.56%	0.2%	1.37%	0.02%	0.3%	2.03%
143	59,559	48	0.08%	46,340	77.81%	33.81%	57.63%	4.19%	0.16%	1.23%	0.05%	0.33%	2.6%
144	59,288	-223	-0.37%	46,102	77.76%	59.72%	29.45%	5.97%	0.26%	1.64%	0.06%	0.31%	2.6%
145	59,509	-2	0.00%	48,770	81.95%	62.13%	31.67%	2.63%	0.15%	1.11%	0.04%	0.34%	1.93%
146	59,511	0	0.00%	43,599	73.26%	52.18%	34.09%	7.01%	0.23%	2.17%	0.09%	0.36%	3.87%
147	59,511	0	0.00%	44,543	74.85%	55.65%	28.35%	6.71%	0.21%	5.03%	0.07%	0.35%	3.64%
148	59,593	82	0.14%	46,187	77.5%	60.19%	32.96%	3.04%	0.12%	1.09%	0.04%	0.28%	2.28%
149	59,595	84	0.14%	48,294	81.04%	68.06%	15.93%	6.62%	0.12%	5.35%	0.05%	0.53%	3.35%
150	60,003	492	0.83%	46,315	77.19%	57.65%	36.58%	2.15%	0.2%	0.94%	0.04%	0.2%	2.23%
151	58,926	-585	-0.98%	46,152	78.32%	51.32%	37.08%	7.18%	0.24%	1.27%	0.18%	0.19%	2.54%
152	59,511	0	0.00%	45,482	76.43%	70.61%	22.22%	2.65%	0.21%	1.69%	0.04%	0.19%	2.39%
153	58,998	-513	-0.86%	45,796	77.62%	34.93%	59.06%	2.44%	0.15%	1.18%	0.02%	0.23%	1.98%
154	58,998	-513	-0.86%	46,182	78.28%	32.61%	62.7%	2.17%	0.18%	0.33%	0.02%	0.15%	1.84%
155	59,639	128	0.22%	46,995	78.8%	58.54%	31.56%	7.31%	0.16%	0.64%	0%	0.16%	1.63%
156	59,163	-348	-0.58%	45,238	76.46%	66.34%	24.5%	6.33%	0.13%	0.56%	0.03%	0.16%	1.95%
157	59,971	460	0.77%	44,596	74.36%	62.21%	24.54%	9.16%	0.21%	1.09%	0.07%	0.25%	2.48%



## Population Summary

GHDC-HousePlan-2021

District	Population	Deviation	% Devn.	[18+ _Pop]	[% 18+ _Pop]	[% NH18+ _Wht]	[% NH18+ _Blk]	[% H18+ _Pop]	[% NH18+ _Ind]	[% NH18+ _Asn]	[% NH18+ _Hwn]	[% NH18+ _Oth]	[% NH18+ 2 + Races]
158	60,024	513	0.86%	46,915	78.16%	60.34%	33.87%	2.95%	0.2%	0.58%	0.04%	0.19%	1.84%
159	59,374	-137	-0.23%	44,636	75.18%	68.84%	24.31%	2.72%	0.3%	0.63%	0.04%	0.22%	2.95%
160	59,127	-384	-0.65%	47,516	80.36%	68.25%	21.28%	5.07%	0.24%	1.66%	0.09%	0.28%	3.12%
161	59,542	31	0.05%	43,912	73.75%	62.37%	24.04%	6.59%	0.24%	2.34%	0.09%	0.5%	3.83%
162	59,400	-111	-0.19%	46,399	78.11%	33.92%	48.36%	9.92%	0.27%	4.52%	0.11%	0.38%	2.52%
163	59,505	-6	-0.01%	48,273	81.12%	43.74%	41.16%	7.01%	0.19%	4.12%	0.16%	0.46%	3.16%
164	59,756	245	0.41%	45,544	76.22%	55.78%	25.53%	8.81%	0.3%	4.8%	0.13%	0.52%	4.13%
165	59,590	79	0.13%	47,573	79.83%	46.78%	41.3%	5.1%	0.19%	3.06%	0.2%	0.37%	3%
166	59,913	402	0.68%	47,251	78.87%	84.84%	4.96%	4.02%	0.19%	2.6%	0.06%	0.33%	3%
167	59,838	327	0.55%	45,680	76.34%	63.16%	23.96%	7.13%	0.33%	1.44%	0.19%	0.4%	3.38%
168	59,508	-3	-0.01%	44,490	74.76%	39.01%	42.46%	10.32%	0.34%	2.34%	0.65%	0.38%	4.5%
169	59,955	444	0.75%	45,452	75.81%	59.35%	27.6%	10.08%	0.16%	0.62%	0.04%	0.13%	2.02%
170	59,961	450	0.76%	45,226	75.43%	65.73%	22.94%	7.31%	0.15%	1.07%	0.02%	0.24%	2.53%
171	59,339	-172	-0.29%	45,756	77.11%	54.05%	38.06%	5.12%	0.23%	0.62%	0.03%	0.16%	1.73%
172	59,591	80	0.13%	44,559	74.77%	58.09%	25.07%	13.69%	0.27%	0.74%	0.02%	0.24%	1.89%
173	59,442	-69	-0.12%	45,211	76.06%	57.5%	33.02%	5.65%	0.31%	0.86%	0.02%	0.25%	2.39%
174	59,508	-3	-0.01%	44,000	73.94%	61.73%	26.99%	6.23%	0.37%	1.31%	0.13%	0.24%	2.99%
175	59,650	139	0.23%	45,012	75.46%	68.71%	22.06%	4.86%	0.32%	1.26%	0.03%	0.22%	2.56%
176	59,710	199	0.33%	45,869	76.82%	79.9%	11.59%	5.06%	0.28%	0.38%	0.03%	0.18%	2.57%
177	59,509	-2	0.00%	45,676	76.75%	38.03%	50.68%	6%	0.21%	1.57%	0.09%	0.37%	3.06%
178	59,747	236	0.40%	44,977	75.28%	76.94%	14.18%	5.93%	0.18%	0.55%	0.02%	0.18%	2.02%
179	59,910	399	0.67%	47,497	79.28%	66.56%	23.58%	5.73%	0.17%	1.04%	0.06%	0.33%	2.53%
180	59,228	-283	-0.48%	45,588	76.97%	66.73%	17.37%	9.45%	0.33%	1.7%	0.1%	0.47%	3.85%

**Total: 10,711,908**

**Ideal District: 59,511**

## Population Summary

Thursday, October 28, 2021

8:14 PM

### Summary Statistics:

Population Range:	58,926 to 60,024
Ratio Range:	0.02
Absolute Range:	-585 to 513
Absolute Overall Range:	1,098
Relative Range:	-0.98% to 0.86%
Relative Overall Range:	1.85%
Absolute Mean Deviation:	208.13
Relative Mean Deviation:	0.35%
Standard Deviation:	271.45

District	Population	Deviation	% Devn.	[18+ _Pop]	[% 18+ _Pop]	[% NH_Wht]	[% AP_Blkl]	[% AP_Asn]	[% AP_Ind]	[% AP_Hwn]	[% AP_Oth]	[% NH_2+ Races]	[% Hispanic Origin]
001	59,039	-472	-0.79%	46,267	78.37%	88.83%	4.26%	0.84%	3.09%	0.11%	2.46%	4.29%	2.53%
002	59,503	-8	-0.01%	43,454	73.03%	66.1%	5.95%	9.98%	2.53%	0.11%	13.92%	4.24%	15.44%
003	59,512	1	0.00%	46,186	77.61%	86.86%	4.13%	2.08%	2.96%	0.25%	3.11%	4.47%	3.6%
004	59,358	-153	-0.26%	43,879	73.92%	50.52%	5.63%	2.03%	4.65%	0.09%	31%	2.43%	40.62%
005	59,001	-510	-0.86%	44,384	75.23%	71.18%	4.84%	1.45%	3.4%	0.11%	15.9%	3.73%	20.05%
006	59,576	65	0.11%	44,680	75%	70.6%	2.76%	1.04%	3.39%	0.05%	17.48%	2.78%	23.82%
007	59,081	-430	-0.72%	48,771	82.55%	87.97%	0.87%	0.75%	3.11%	0.05%	6.33%	3.27%	7.43%
008	59,872	361	0.61%	50,372	84.13%	90.32%	1.18%	0.8%	2.71%	0.09%	4.01%	3.26%	4.7%
009	59,528	17	0.03%	48,155	80.89%	87.31%	1.87%	1.43%	3.19%	0.15%	5.13%	4.24%	5.79%
010	59,531	20	0.03%	46,913	78.8%	79.55%	4.37%	1.88%	3.01%	0.13%	8.98%	3.89%	11.15%
011	59,511	0	0.00%	46,785	78.62%	88.84%	1.93%	0.87%	3.1%	0.08%	4.33%	3.93%	5.1%
012	59,580	69	0.12%	46,298	77.71%	85.51%	7.46%	0.75%	2.53%	0.13%	3.34%	3.99%	3.49%
013	59,511	0	0.00%	45,375	76.25%	58.73%	22.01%	2.31%	2.61%	0.11%	12.92%	3.63%	15.19%
014	59,659	148	0.25%	46,120	77.31%	81.87%	7.34%	1.22%	2.9%	0.1%	5.6%	4.22%	6.65%
015	59,511	0	0.00%	45,764	76.9%	68.54%	15.74%	1.64%	2.87%	0.13%	9.7%	4.31%	11.71%
016	59,758	247	0.42%	45,634	76.36%	73.13%	11.89%	0.85%	2.58%	0.11%	9.74%	3.53%	11.81%
017	59,511	0	0.00%	43,434	72.98%	67%	22.41%	1.61%	2.29%	0.19%	6.09%	4.5%	7.17%
018	59,766	255	0.43%	45,710	76.48%	78.46%	11.85%	0.93%	2.29%	0.1%	5.57%	3.59%	6.35%
019	59,652	141	0.24%	43,447	72.83%	61.44%	26.55%	2.59%	2.18%	0.19%	6.6%	4.22%	7.69%
020	59,333	-178	-0.30%	45,586	76.83%	68.74%	11.01%	3.66%	2.73%	0.15%	11.95%	4.88%	13.89%
021	59,513	2	0.00%	44,643	75.01%	73.94%	9.78%	3.59%	2.32%	0.16%	9.02%	4.63%	10.15%
022	59,527	16	0.03%	45,121	75.8%	82.88%	4.83%	2.47%	2.43%	0.14%	6.26%	4.19%	7.19%
023	59,347	-164	-0.28%	45,536	76.73%	72.71%	7.18%	1.5%	3.31%	0.11%	12.55%	3.89%	16.22%
024	59,176	-335	-0.56%	41,808	70.65%	69.51%	5.24%	14.49%	1.72%	0.11%	8.15%	3.97%	8.38%
025	59,721	210	0.35%	42,035	70.39%	51.38%	6.63%	32.08%	1.26%	0.13%	8.14%	3.44%	8.37%
026	59,538	27	0.05%	44,423	74.61%	71.13%	3.21%	14.31%	2.06%	0.13%	8.04%	3.33%	9.29%
027	59,512	1	0.00%	46,884	78.78%	78.01%	5.05%	1.45%	2.67%	0.11%	10.66%	3.76%	12.94%
028	59,491	-20	-0.03%	46,345	77.9%	80.77%	8.59%	1.7%	2.57%	0.14%	5.35%	3.93%	6.41%
029	59,511	0	0.00%	43,681	73.4%	37.67%	12.89%	3.07%	2.65%	0.14%	36.73%	2.16%	45.55%

## Population Summary

GHDC-HousePlan-2021

District	Population	Deviation	% Devn.	[18+_Pop]	[% 18+_Pop]	[% NH_Wht]	[% AP_Blkl]	[% AP_Asn]	[% AP_Ind]	[% AP_Hwn]	[% AP_Oth]	[% NH 2+ Races]	[% Hispanic Origin]
030	59,320	-191	-0.32%	44,425	74.89%	54.12%	8.41%	3.08%	3.06%	0.08%	26.6%	2.93%	32.9%
031	59,485	-26	-0.04%	43,764	73.57%	77.2%	7.52%	3.45%	2.36%	0.12%	7.91%	3.85%	9.48%
032	59,568	57	0.10%	46,697	78.39%	79.95%	12.31%	1.52%	1.97%	0.11%	3.74%	3.38%	4.04%
033	60,015	504	0.85%	46,386	77.29%	72.72%	16.44%	1.8%	2.12%	0.1%	5.86%	3.46%	6.95%
034	59,443	-68	-0.11%	47,097	79.23%	59.02%	22.5%	6.76%	1.98%	0.12%	9.24%	4.66%	10.11%
035	59,720	209	0.35%	45,660	76.46%	55.17%	25.64%	5.73%	2.17%	0.14%	10.77%	4.98%	12.04%
036	59,497	-14	-0.02%	44,534	74.85%	70.94%	15.82%	4.54%	2.15%	0.17%	6.4%	4.72%	6.66%
037	59,856	345	0.58%	47,990	80.18%	45.77%	27.7%	5.94%	2.27%	0.2%	16.76%	4.34%	19.07%
038	59,652	141	0.24%	45,482	76.25%	27.18%	55.52%	2.75%	2%	0.19%	12.38%	3.7%	14.59%
039	59,075	-436	-0.73%	44,135	74.71%	20.79%	54.92%	2.1%	2.14%	0.14%	19.57%	3.26%	22.3%
040	59,139	-372	-0.63%	49,622	83.91%	46.3%	33.01%	11.21%	1.58%	0.18%	7.66%	4.34%	8.57%
041	59,690	179	0.30%	44,440	74.45%	26.08%	38.23%	3.37%	2.71%	0.14%	25.89%	3.28%	31.87%
042	59,523	12	0.02%	47,716	80.16%	31.71%	35.51%	5.17%	2.76%	0.15%	23.17%	4.43%	26.19%
043	59,064	-447	-0.75%	45,439	76.93%	57.68%	16.6%	13.37%	1.68%	0.12%	10.51%	5.8%	8.1%
044	59,373	-138	-0.23%	46,067	77.59%	64.12%	14.69%	8.3%	2.25%	0.18%	10.05%	5.44%	10.38%
045	59,566	55	0.09%	44,209	74.22%	74.91%	5.97%	11.06%	1.38%	0.09%	6.27%	4.35%	5.97%
046	59,546	35	0.06%	44,947	75.48%	72.93%	8.2%	6.26%	1.79%	0.15%	9.68%	4.61%	10.22%
047	58,967	-544	-0.91%	43,110	73.11%	66.71%	9.93%	14.89%	1.6%	0.13%	6.57%	4.35%	6.66%
048	59,597	86	0.14%	46,049	77.27%	54.79%	15.54%	7.84%	2.14%	0.13%	18.43%	4.23%	20.27%
049	59,674	163	0.27%	45,390	76.06%	54.72%	11.37%	23.8%	1.16%	0.16%	8.38%	3.89%	8.4%
050	58,945	-566	-0.95%	43,572	73.92%	42.39%	12.63%	37.55%	0.94%	0.16%	6.46%	4.08%	6.39%
051	59,538	27	0.05%	48,052	80.71%	53.91%	24.48%	8.12%	1.67%	0.17%	11.54%	4.61%	12.17%
052	59,618	107	0.18%	48,196	80.84%	56.26%	16.84%	12.82%	1.49%	0.2%	12.3%	3.84%	13.2%
053	59,515	4	0.01%	44,376	74.56%	26.37%	60.31%	4.15%	1.58%	0.14%	7.54%	3.67%	9.17%
054	59,916	405	0.68%	52,449	87.54%	63.37%	18.57%	9.49%	1.45%	0.13%	7.12%	3.84%	7.83%
055	59,379	-132	-0.22%	46,916	79.01%	4.9%	91.87%	0.82%	1.23%	0.1%	2.32%	2.35%	2.81%
056	59,151	-360	-0.60%	52,459	88.69%	33.78%	50.75%	9.77%	1.32%	0.21%	4.47%	3.81%	5.57%
057	59,870	359	0.60%	51,891	86.67%	44.74%	39.93%	7.08%	1.28%	0.14%	6.37%	3.74%	7.67%
058	59,724	213	0.36%	51,871	86.85%	36.17%	52.64%	5.57%	1.52%	0.14%	4.54%	4.16%	5.38%
059	59,872	361	0.61%	47,237	78.9%	33.09%	52.18%	3.29%	1.91%	0.14%	9.15%	3.65%	11.13%
060	59,485	-26	-0.04%	44,361	74.58%	8.24%	75.28%	2.16%	1.81%	0.1%	12.55%	2.53%	14.68%
061	59,865	354	0.59%	45,682	76.31%	14.27%	74.08%	1.4%	1.63%	0.19%	9%	2.9%	10.5%
062	59,599	88	0.15%	44,935	75.4%	32.31%	55.74%	1.74%	1.92%	0.14%	8.3%	3.76%	9.7%
063	59,936	425	0.71%	46,251	77.17%	11.44%	81.93%	1.87%	1.31%	0.12%	4.5%	2.8%	5.04%
064	60,007	496	0.83%	44,827	74.7%	5.1%	89.69%	1.07%	1.19%	0.1%	4.52%	2.6%	4.8%
065	59,415	-96	-0.16%	44,449	74.81%	10.77%	80.68%	1.14%	1.26%	0.08%	6.85%	2.58%	7.9%
066	59,054	-457	-0.77%	43,879	74.3%	30.96%	56.56%	2.28%	2.06%	0.22%	8.3%	4.19%	9.69%
067	59,367	-144	-0.24%	44,550	75.04%	64.67%	23.83%	1.8%	2.64%	0.13%	6.73%	4.65%	7.58%
068	59,140	-371	-0.62%	44,313	74.93%	67.24%	21.46%	1.54%	2.7%	0.12%	6.44%	4.8%	7.36%
069	59,651	140	0.24%	46,047	77.19%	66.28%	24.02%	2.06%	2.16%	0.14%	4.81%	3.81%	5.86%
070	59,322	-189	-0.32%	45,268	76.31%	72.38%	17.11%	1.97%	2.33%	0.13%	5.54%	3.82%	6.4%
071	59,203	-308	-0.52%	45,550	76.94%	65.11%	17.82%	6.77%	2.14%	0.12%	7.31%	4.19%	8.57%
072	59,975	464	0.78%	45,925	76.57%	66.7%	17.1%	6.45%	2.04%	0.2%	7.42%	4.37%	7.85%
073	59,455	-56	-0.09%	44,961	75.62%	56.73%	32.56%	2.53%	2.33%	0.15%	5.55%	3.85%	6.69%



## Population Summary

GHDC-HousePlan-2021

District	Population	Deviation	% Devn.	[18+_Pop]	[% 18+_Pop]	[% NH_Wht]	[% AP_Blkl]	[% AP_Asn]	[% AP_Ind]	[% AP_Hwn]	[% AP_Oth]	[% NH 2+ Races]	[% Hispanic Origin]
074	59,453	-58	-0.10%	44,149	74.26%	7.03%	70.25%	7.61%	1.75%	0.13%	13.37%	2.18%	15.91%
075	59,873	362	0.61%	44,777	74.79%	11.13%	73.76%	4.82%	1.74%	0.13%	9.5%	3.09%	11.07%
076	59,544	33	0.06%	45,413	76.27%	12.79%	72.32%	5.43%	1.76%	0.16%	8.71%	3.03%	9.98%
077	59,646	135	0.23%	43,403	72.77%	5.89%	73.88%	3.86%	1.86%	0.14%	14.7%	2.48%	17.16%
078	59,789	278	0.47%	45,365	75.88%	24.1%	59.19%	7.09%	1.77%	0.21%	8.58%	3.59%	9.72%
079	59,508	-3	-0.01%	45,458	76.39%	50.91%	15.12%	18.16%	1.9%	0.12%	13.37%	3.76%	14.67%
080	59,157	-354	-0.59%	47,688	80.61%	59.17%	13.37%	8.86%	1.74%	0.13%	15.62%	3.59%	17.82%
081	59,884	373	0.63%	45,348	75.73%	35.79%	12.32%	12.06%	3.89%	0.16%	33.94%	2.84%	39.4%
082	59,699	188	0.32%	48,887	81.89%	46.64%	20.38%	10.49%	1.87%	0.11%	19.48%	3.66%	21.7%
083	59,624	113	0.19%	46,307	77.67%	38.35%	52.81%	3.9%	1.31%	0.15%	4.27%	3.93%	4.39%
084	59,343	-168	-0.28%	47,225	79.58%	31.09%	58.96%	5.6%	1.38%	0.1%	3.96%	3.88%	4.03%
085	59,792	281	0.47%	46,309	77.45%	24.04%	55.28%	15.32%	1.39%	0.15%	5.02%	3.96%	5.02%
086	59,633	122	0.21%	45,637	76.53%	25.7%	57.94%	9.73%	1.24%	0.13%	5.35%	3.26%	6.49%
087	59,801	290	0.49%	46,173	77.21%	16.16%	67.05%	8.38%	1.6%	0.15%	8.08%	3.39%	8.67%
088	59,512	1	0.00%	46,477	78.1%	16.22%	68.51%	3.75%	2.05%	0.18%	10.5%	3.33%	12.04%
089	59,007	-504	-0.85%	47,155	79.91%	31.55%	60.09%	2.72%	1.32%	0.14%	4.88%	3.7%	5.24%
090	59,411	-100	-0.17%	46,508	78.28%	19.22%	75.2%	1.64%	1.48%	0.08%	3.97%	3.17%	4.03%
091	59,019	-492	-0.83%	45,395	76.92%	17.38%	75.1%	1.99%	1.42%	0.17%	5.5%	3.31%	5.53%
092	59,597	86	0.14%	44,307	74.34%	11.38%	77.37%	1.15%	1.35%	0.19%	9.44%	3.01%	10.53%
093	59,455	-56	-0.09%	44,281	74.48%	12.27%	76.26%	2.96%	1.57%	0.14%	8.64%	3.49%	9.58%
094	59,305	-206	-0.35%	44,803	75.55%	18.25%	66.87%	6.26%	1.75%	0.16%	8.05%	3.53%	9.03%
095	59,763	252	0.42%	46,128	77.18%	40.81%	25.41%	13.38%	1.93%	0.19%	17.62%	3.93%	20.23%
096	59,534	23	0.04%	45,289	76.07%	19.47%	24.71%	20.09%	2.49%	0.22%	31.08%	2.86%	35.97%
097	59,294	-217	-0.36%	42,583	71.82%	51.43%	11.96%	24.48%	1.57%	0.15%	9.62%	4.01%	10.97%
098	59,512	1	0.00%	42,682	71.72%	45.29%	30.15%	7.81%	2.1%	0.2%	14.02%	3.95%	16.63%
099	59,736	225	0.38%	42,537	71.21%	9.67%	22.13%	11.42%	3.71%	0.22%	49.17%	1.85%	57.51%
100	59,526	15	0.03%	44,064	74.02%	12.37%	31.71%	14.36%	2.66%	0.15%	36.38%	2.56%	42.74%
101	59,281	-230	-0.39%	45,347	76.49%	27.68%	27.54%	18.76%	2.41%	0.19%	22.06%	3.37%	26.29%
102	58,952	-559	-0.94%	44,877	76.12%	34.91%	31.56%	11.43%	2.13%	0.17%	18.79%	3.68%	22.2%
103	59,308	-203	-0.34%	43,664	73.62%	58.36%	14.21%	8.85%	2.1%	0.16%	14.47%	3.6%	17.43%
104	59,524	13	0.02%	43,661	73.35%	53.27%	21.14%	12.25%	1.79%	0.14%	10.59%	3.97%	12.58%
105	59,511	0	0.00%	43,243	72.66%	28.68%	45.91%	8.29%	2.02%	0.16%	15.18%	3.88%	17.45%
106	59,532	21	0.04%	44,091	74.06%	35.16%	43.03%	9.71%	2.06%	0.17%	10.39%	4.2%	11.83%
107	58,947	-564	-0.95%	43,486	73.77%	27.58%	28.81%	18.91%	2.25%	0.16%	20.99%	3.13%	24.9%
108	59,405	-106	-0.18%	44,311	74.59%	34.44%	21.89%	20.42%	2.35%	0.16%	19.58%	3.5%	22.75%
109	59,486	-25	-0.04%	44,473	74.76%	37.33%	50.9%	3.77%	1.98%	0.2%	6.62%	4.29%	7.34%
110	59,069	-442	-0.74%	44,030	74.54%	64.71%	26.7%	1.27%	2.13%	0.15%	4.87%	3.76%	5.46%
111	59,765	254	0.43%	44,383	74.26%	32.18%	55.68%	3.93%	1.7%	0.17%	6.98%	3.83%	8.01%
112	58,991	-520	-0.87%	43,954	74.51%	77.67%	13.08%	3.37%	1.82%	0.07%	3.62%	3.03%	4.03%
113	59,201	-310	-0.52%	43,906	74.16%	22.18%	68.61%	1.65%	1.54%	0.24%	6.59%	3.67%	7.12%
114	59,513	2	0.00%	43,502	73.1%	51.01%	34.19%	3.28%	1.93%	0.16%	9.36%	3.83%	10.57%
115	59,062	-449	-0.75%	44,162	74.77%	67.69%	20.84%	2.45%	2.27%	0.13%	5.96%	3.91%	6.83%
116	59,943	432	0.73%	45,302	75.58%	67.37%	14.01%	4.75%	2.45%	0.17%	9.75%	4.09%	11.98%
117	59,574	63	0.11%	49,997	83.92%	65.92%	16.36%	7.31%	1.67%	0.15%	7.34%	3.63%	8.7%

## Population Summary

GHDC-HousePlan-2021

District	Population	Deviation	% Devn.	[18+_Pop]	[% 18+_Pop]	[% NH_Wht]	[% AP_Blkl]	[% AP_Asn]	[% AP_Ind]	[% AP_Hwn]	[% AP_Oth]	[% NH 2+ Races]	[% Hispanic Origin]
118	59,844	333	0.56%	48,350	80.79%	48.54%	32.75%	3.15%	1.68%	0.2%	12.23%	3.19%	13.93%
119	59,891	380	0.64%	45,332	75.69%	18.36%	69.58%	3.31%	1.6%	0.15%	7.74%	3.14%	9.31%
120	59,733	222	0.37%	47,997	80.35%	64.19%	24.81%	2.22%	1.8%	0.16%	6.2%	3.46%	6.81%
121	59,591	80	0.13%	45,496	76.35%	64.81%	26.41%	2.03%	2.27%	0.33%	4.2%	4.23%	5.23%
122	59,518	7	0.01%	43,184	72.56%	67.29%	16.25%	8.66%	1.99%	0.42%	5.24%	5.46%	6.24%
123	59,698	187	0.31%	46,931	78.61%	65.5%	21.17%	5.78%	2.2%	0.38%	4.78%	4.92%	5.88%
124	59,863	352	0.59%	47,628	79.56%	34.52%	57.33%	2.84%	1.59%	0.23%	3.95%	3.63%	4.86%
125	59,863	352	0.59%	44,610	74.52%	24.83%	69.37%	1.39%	1.58%	0.3%	3.29%	3.42%	4.16%
126	59,913	402	0.68%	45,800	76.44%	38.27%	54.01%	1.79%	1.77%	0.4%	3.61%	3.66%	4.95%
127	59,769	258	0.43%	45,675	76.42%	38.61%	45.25%	4.92%	2.45%	0.54%	7.86%	5.67%	10.76%
128	59,683	172	0.29%	47,025	78.79%	39.4%	57.35%	0.63%	1.03%	0.14%	1.71%	2.05%	1.98%
129	59,049	-462	-0.78%	45,727	77.44%	68.53%	22.36%	1.33%	2.39%	0.15%	5.01%	3.81%	5.83%
130	59,518	7	0.01%	45,447	76.36%	52.17%	39.91%	1.39%	1.77%	0.11%	4.4%	3.44%	5.14%
131	59,321	-190	-0.32%	46,120	77.75%	70.74%	24.26%	0.9%	1.84%	0.09%	2.11%	3.26%	2.27%
132	59,066	-445	-0.75%	44,684	75.65%	64.82%	25.59%	1.76%	1.99%	0.13%	5.15%	3.51%	5.93%
133	59,704	193	0.32%	45,813	76.73%	61.16%	30.84%	2.43%	1.72%	0.15%	3.51%	3.36%	3.89%
134	59,263	-248	-0.42%	45,749	77.2%	64.98%	20.42%	5.45%	2.48%	0.4%	5.78%	4.89%	7.36%
135	59,511	0	0.00%	44,554	74.87%	29.02%	59.53%	1.98%	2.01%	0.48%	7.19%	4.38%	9.05%
136	59,805	294	0.49%	45,173	75.53%	31.85%	55.57%	4.64%	1.94%	0.56%	5.97%	4.3%	7.81%
137	59,758	247	0.42%	46,253	77.4%	39.35%	53.27%	2.09%	1.57%	0.37%	3.57%	3.36%	5.13%
138	59,005	-506	-0.85%	44,980	76.23%	37.97%	17.46%	33.89%	1.42%	0.2%	9.03%	4.08%	10.13%
139	59,040	-471	-0.79%	46,978	79.57%	36.64%	56.4%	1.48%	0.93%	0.14%	4.22%	1.83%	5.02%
140	59,386	-125	-0.21%	46,873	78.93%	63.82%	29.74%	0.93%	1.89%	0.12%	3.26%	3.21%	3.69%
141	59,321	-190	-0.32%	46,459	78.32%	65.61%	26.37%	3.91%	1.44%	0.06%	2.58%	2.81%	3.01%
142	59,511	0	0.00%	44,230	74.32%	26.6%	67.11%	1.59%	1.1%	0.09%	3.92%	2.53%	4.3%
143	59,559	48	0.08%	46,340	77.81%	30.32%	63.24%	1.6%	1.37%	0.15%	3.93%	3.05%	4.21%
144	59,288	-223	-0.37%	46,102	77.76%	57.14%	32.4%	2.33%	1.87%	0.18%	5.79%	3.38%	6.81%
145	59,509	-2	0.00%	48,770	81.95%	59.28%	34.97%	1.44%	1.29%	0.11%	2.83%	2.5%	2.98%
146	59,511	0	0.00%	43,599	73.26%	48.97%	38.66%	3.2%	2.19%	0.27%	6.74%	4.89%	8.16%
147	59,511	0	0.00%	44,543	74.85%	52.53%	31.99%	6.54%	1.99%	0.28%	6.47%	4.83%	7.75%
148	59,593	82	0.14%	46,187	77.5%	57.79%	35.72%	1.57%	1.53%	0.13%	3.12%	2.84%	3.66%
149	59,595	84	0.14%	48,294	81.04%	68.39%	17.07%	6.6%	1.36%	0.17%	6.5%	3.95%	7.14%
150	60,003	492	0.83%	46,315	77.19%	55.16%	40.08%	1.21%	1.36%	0.1%	2.12%	2.73%	2.52%
151	58,926	-585	-0.98%	46,152	78.32%	49.28%	40.22%	1.87%	1.88%	0.55%	6.07%	3.06%	7.45%
152	59,511	0	0.00%	45,482	76.43%	68.73%	24.22%	2.36%	1.68%	0.13%	2.82%	2.97%	3.11%
153	58,998	-513	-0.86%	45,796	77.62%	31.31%	64.02%	1.53%	1.01%	0.14%	2.42%	2.37%	2.79%
154	58,998	-513	-0.86%	46,182	78.28%	30.27%	65.97%	0.61%	1.13%	0.12%	2.39%	2.17%	2.68%
155	59,639	128	0.22%	46,995	78.8%	57.21%	34.23%	0.84%	1.27%	0.08%	3.91%	2.15%	7.32%
156	59,163	-348	-0.58%	45,238	76.46%	63.63%	26.87%	0.81%	1.57%	0.09%	6.12%	2.51%	7.48%
157	59,971	460	0.77%	44,596	74.36%	59.25%	26.73%	1.63%	1.83%	0.27%	9.05%	3.27%	11.32%
158	60,024	513	0.86%	46,915	78.16%	58.01%	36.51%	0.81%	1.34%	0.13%	2.99%	2.26%	3.63%
159	59,374	-137	-0.23%	44,636	75.18%	66.79%	26.62%	1.12%	2.19%	0.13%	2.91%	3.63%	3.46%
160	59,127	-384	-0.65%	47,516	80.36%	66.56%	23.88%	2.38%	1.99%	0.28%	4.36%	3.72%	5.53%
161	59,542	31	0.05%	43,912	73.75%	59.78%	27.48%	3.33%	2.37%	0.26%	6.27%	4.88%	7.69%

## Population Summary

GHDC-HousePlan-2021

District	Population	Deviation	% Devn.	[18+ _Pop]	[% 18+ _Pop]	[% NH_Wht]	[% AP_Blkl]	[% AP_Asn]	[% AP_Ind]	[% AP_Hwn]	[% AP_Oth]	[% NH 2+ Races]	[% Hispanic Origin]
162	59,400	-111	-0.19%	46,399	78.11%	30.25%	53.37%	4.66%	1.75%	0.28%	9.22%	3.02%	11.24%
163	59,505	-6	-0.01%	48,273	81.12%	39.95%	46.85%	4.74%	1.71%	0.31%	6.2%	3.63%	7.59%
164	59,756	245	0.41%	45,544	76.22%	52.84%	29.56%	6.08%	2.23%	0.36%	8.29%	5.03%	10.12%
165	59,590	79	0.13%	47,573	79.83%	42.98%	46.57%	3.66%	1.57%	0.36%	4.9%	3.61%	5.7%
166	59,913	402	0.68%	47,251	78.87%	82.88%	6.05%	3.75%	1.85%	0.22%	4.68%	3.85%	5.18%
167	59,838	327	0.55%	45,680	76.34%	60.39%	27.04%	2.19%	2.56%	0.46%	6.46%	4.4%	8.38%
168	59,508	-3	-0.01%	44,490	74.76%	35.93%	49.32%	3.45%	2.41%	1.16%	7.73%	5.82%	11.22%
169	59,955	444	0.75%	45,452	75.81%	56.8%	28.74%	0.84%	1.73%	0.15%	9.56%	2.58%	12.48%
170	59,961	450	0.76%	45,226	75.43%	62.65%	25.5%	1.4%	1.83%	0.11%	7.23%	3.07%	8.94%
171	59,339	-172	-0.29%	45,756	77.11%	51.45%	40.5%	0.85%	1.22%	0.1%	5.42%	2.11%	6.29%
172	59,591	80	0.13%	44,559	74.77%	54.17%	27.35%	1.04%	1.91%	0.07%	12.74%	2.23%	16.33%
173	59,442	-69	-0.12%	45,211	76.06%	54.26%	35.84%	1.13%	2.07%	0.07%	6.32%	2.8%	7.37%
174	59,508	-3	-0.01%	44,000	73.94%	58.54%	30.57%	1.96%	2.09%	0.35%	5.66%	3.98%	7.32%
175	59,650	139	0.23%	45,012	75.46%	66.55%	24.07%	1.8%	1.93%	0.16%	4.74%	3.24%	5.9%
176	59,710	199	0.33%	45,869	76.82%	78.5%	12.45%	0.71%	2.12%	0.15%	5.09%	3.15%	6.17%
177	59,509	-2	0.00%	45,676	76.75%	34.14%	56.47%	2.16%	1.6%	0.27%	5.16%	3.41%	6.59%
178	59,747	236	0.40%	44,977	75.28%	74.03%	16.61%	0.8%	1.56%	0.1%	5.82%	2.69%	7.38%
179	59,910	399	0.67%	47,497	79.28%	62.36%	27.84%	1.57%	1.7%	0.22%	5.92%	3.11%	6.92%
180	59,228	-283	-0.48%	45,588	76.97%	65.13%	21%	2.78%	2.69%	0.37%	5.3%	5.12%	9.32%

**Total: 10,711,908**

**Ideal District: 59,511**

## Population Summary

Thursday, October 28, 2021

8:44 PM

### Summary Statistics:

Population Range:	58,926 to 60,024
Ratio Range:	0.02
Absolute Range:	-585 to 513
Absolute Overall Range:	1,098
Relative Range:	-0.98% to 0.86%
Relative Overall Range:	1.85%
Absolute Mean Deviation:	208.13
Relative Mean Deviation:	0.35%
Standard Deviation:	271.45

District	Population	Deviation	% Devn.	[18+_Pop]	[% 18+_Pop]	[% NH18+_Wht]	[% 18+_AP_Blkl]	[% 18+_AP_Asn]	[% 18+_AP_Ind]	[% 18+_AP_Hwn]	[% 18+_AP_Oth]	[% NH18+_2+ Races]	[% H18+_Pop]
001	59,039	-472	-0.79%	46,267	78.37%	90.27%	3.47%	0.75%	2.94%	0.08%	2.1%	3.59%	2.01%
002	59,503	-8	-0.01%	43,454	73.03%	69.6%	5.34%	8.87%	2.5%	0.09%	12.51%	3.65%	13.5%
003	59,512	1	0.00%	46,186	77.61%	88.43%	3.38%	1.86%	2.91%	0.2%	2.7%	3.77%	2.96%
004	59,358	-153	-0.26%	43,879	73.92%	55.92%	5.3%	1.98%	4.19%	0.09%	27.62%	2.14%	35.31%
005	59,001	-510	-0.86%	44,384	75.23%	74.7%	4.32%	1.37%	3.43%	0.09%	13.61%	3.32%	16.74%
006	59,576	65	0.11%	44,680	75%	74.83%	2.28%	0.93%	3.16%	0.06%	15.03%	2.42%	19.96%
007	59,081	-430	-0.72%	48,771	82.55%	90.15%	0.62%	0.67%	2.88%	0.04%	4.95%	3.02%	5.53%
008	59,872	361	0.61%	50,372	84.13%	91.7%	0.95%	0.7%	2.42%	0.09%	3.39%	2.85%	3.79%
009	59,528	17	0.03%	48,155	80.89%	88.48%	1.61%	1.39%	3.03%	0.15%	4.48%	3.76%	5%
010	59,531	20	0.03%	46,913	78.8%	82.28%	4.21%	1.76%	2.98%	0.09%	7.17%	3.38%	8.63%
011	59,511	0	0.00%	46,785	78.62%	90.43%	1.52%	0.76%	2.94%	0.07%	3.67%	3.47%	3.97%
012	59,580	69	0.12%	46,298	77.71%	86.6%	7.26%	0.65%	2.52%	0.08%	2.69%	3.2%	2.73%
013	59,511	0	0.00%	45,375	76.25%	63.06%	20.31%	2.26%	2.45%	0.09%	10.73%	2.91%	12.44%
014	59,659	148	0.25%	46,120	77.31%	83.54%	6.86%	1.09%	2.82%	0.07%	4.79%	3.46%	5.47%
015	59,511	0	0.00%	45,764	76.9%	71.95%	14.26%	1.55%	2.91%	0.12%	8.24%	3.43%	9.64%
016	59,758	247	0.42%	45,634	76.36%	76.87%	10.83%	0.81%	2.48%	0.1%	7.66%	2.85%	9.12%
017	59,511	0	0.00%	43,434	72.98%	69.86%	20.44%	1.4%	2.34%	0.12%	5.59%	3.55%	6.13%
018	59,766	255	0.43%	45,710	76.48%	80.06%	11.32%	0.83%	2.32%	0.08%	4.81%	2.94%	5.31%
019	59,652	141	0.24%	43,447	72.83%	64.02%	24.86%	2.4%	2.16%	0.19%	5.99%	3.42%	6.84%
020	59,333	-178	-0.30%	45,586	76.83%	71.85%	9.92%	3.36%	2.69%	0.12%	10.77%	4.12%	12.07%
021	59,513	2	0.00%	44,643	75.01%	76.13%	9.12%	3.27%	2.21%	0.17%	8.15%	3.71%	8.92%
022	59,527	16	0.03%	45,121	75.8%	84.67%	4.26%	2.15%	2.31%	0.15%	5.59%	3.42%	6.26%
023	59,347	-164	-0.28%	45,536	76.73%	76.72%	6.36%	1.39%	3.02%	0.1%	10.35%	3.21%	13.15%
024	59,176	-335	-0.56%	41,808	70.65%	72.7%	4.76%	12.9%	1.56%	0.1%	7.36%	2.91%	7.43%
025	59,721	210	0.35%	42,035	70.39%	55.67%	6.51%	28.44%	1.1%	0.12%	7.67%	2.73%	7.79%
026	59,538	27	0.05%	44,423	74.61%	75.17%	2.77%	11.79%	2%	0.1%	7.13%	2.85%	8.1%
027	59,512	1	0.00%	46,884	78.78%	81.12%	4.27%	1.32%	2.62%	0.09%	9.03%	3.2%	10.64%
028	59,491	-20	-0.03%	46,345	77.9%	83.11%	7.7%	1.54%	2.53%	0.12%	4.4%	3.04%	5.06%

## Population Summary

GHDC-HousePlan-2021

District	Population	Deviation	% Devn.	[18+_Pop]	[% 18+_Pop]	[% NH18+_Wht]	[% 18+_AP_Blkl]	[% 18+_AP_Asn]	[% 18+_AP_Ind]	[% 18+_AP_Hwn]	[% 18+_AP_Oth]	[% NH18+_2+ Races]	[% H18+_Pop]
029	59,511	0	0.00%	43,681	73.4%	44.16%	12.71%	3.25%	2.62%	0.12%	31.76%	1.9%	38.81%
030	59,320	-191	-0.32%	44,425	74.89%	59.1%	8.11%	2.97%	2.89%	0.08%	23.23%	2.54%	28.05%
031	59,485	-26	-0.04%	43,764	73.57%	79.1%	6.99%	3.15%	2.23%	0.11%	7.3%	3.07%	8.37%
032	59,568	57	0.10%	46,697	78.39%	82.19%	11.17%	1.42%	1.85%	0.07%	3.04%	2.46%	3.16%
033	60,015	504	0.85%	46,386	77.29%	75.06%	15.5%	1.69%	2.07%	0.06%	4.99%	2.76%	5.65%
034	59,443	-68	-0.11%	47,097	79.23%	61.94%	21.02%	6.37%	1.92%	0.11%	8.28%	3.89%	8.79%
035	59,720	209	0.35%	45,660	76.46%	58.43%	23.68%	5.56%	1.98%	0.13%	9.79%	3.8%	10.71%
036	59,497	-14	-0.02%	44,534	74.85%	73.62%	14.45%	3.99%	1.91%	0.15%	5.78%	3.53%	5.8%
037	59,856	345	0.58%	47,990	80.18%	49.24%	27.21%	5.65%	2.1%	0.18%	14.48%	3.61%	16.25%
038	59,652	141	0.24%	45,482	76.25%	31.36%	52.9%	2.71%	1.95%	0.18%	10.99%	3.19%	12.41%
039	59,075	-436	-0.73%	44,135	74.71%	23.77%	54.56%	2.24%	2.12%	0.12%	17.16%	2.84%	19.09%
040	59,139	-372	-0.63%	49,622	83.91%	48.91%	31.56%	10.59%	1.48%	0.15%	7.17%	3.67%	7.69%
041	59,690	179	0.30%	44,440	74.45%	29.97%	37.88%	3.55%	2.71%	0.12%	23.02%	2.82%	27.63%
042	59,523	12	0.02%	47,716	80.16%	35.45%	34.9%	5.33%	2.51%	0.14%	20.2%	4.08%	22.54%
043	59,064	-447	-0.75%	45,439	76.93%	60.23%	15.98%	12.1%	1.6%	0.1%	9.95%	4.98%	7.22%
044	59,373	-138	-0.23%	46,067	77.59%	66.89%	13.44%	7.82%	2.14%	0.17%	9.15%	4.36%	9.14%
045	59,566	55	0.09%	44,209	74.22%	77.15%	5.73%	9.84%	1.32%	0.08%	5.57%	3.25%	5.35%
046	59,546	35	0.06%	44,947	75.48%	75.38%	7.69%	5.61%	1.7%	0.14%	8.62%	3.56%	9.02%
047	58,967	-544	-0.91%	43,110	73.11%	68.35%	9.56%	13.94%	1.55%	0.11%	6.33%	3.41%	6.34%
048	59,597	86	0.14%	46,049	77.27%	58.44%	15.01%	7.34%	1.99%	0.15%	16.35%	3.72%	17.5%
049	59,674	163	0.27%	45,390	76.06%	58.14%	10.84%	21.63%	1.1%	0.14%	7.68%	3.15%	7.69%
050	58,945	-566	-0.95%	43,572	73.92%	45.18%	11.98%	36.11%	0.89%	0.15%	5.84%	3.08%	5.74%
051	59,538	27	0.05%	48,052	80.71%	56.59%	23.22%	7.78%	1.6%	0.15%	10.41%	3.89%	10.7%
052	59,618	107	0.18%	48,196	80.84%	58.1%	16.93%	12.4%	1.46%	0.18%	10.8%	3.39%	11.42%
053	59,515	4	0.01%	44,376	74.56%	28.56%	59.12%	4.04%	1.6%	0.12%	6.83%	3.15%	8.07%
054	59,916	405	0.68%	52,449	87.54%	63.85%	18.82%	9.34%	1.27%	0.12%	6.49%	3.18%	7.19%
055	59,379	-132	-0.22%	46,916	79.01%	5.65%	91.24%	0.78%	1.27%	0.1%	2.17%	2.28%	2.5%
056	59,151	-360	-0.60%	52,459	88.69%	36.49%	47.41%	10.27%	1.23%	0.22%	4.45%	3.64%	5.52%
057	59,870	359	0.60%	51,891	86.67%	46.25%	38.73%	7.09%	1.15%	0.11%	5.86%	3.14%	7.27%
058	59,724	213	0.36%	51,871	86.85%	39.29%	49.11%	5.72%	1.47%	0.14%	4.55%	3.85%	5.48%
059	59,872	361	0.61%	47,237	78.9%	36.4%	49.8%	3.34%	1.87%	0.13%	8.1%	3.31%	9.87%
060	59,485	-26	-0.04%	44,361	74.58%	9.91%	75.17%	2.32%	1.79%	0.1%	11.04%	2.26%	12.77%
061	59,865	354	0.59%	45,682	76.31%	16.23%	73.39%	1.42%	1.65%	0.17%	7.82%	2.57%	8.78%
062	59,599	88	0.15%	44,935	75.4%	35.82%	53.5%	1.66%	1.91%	0.11%	7.33%	3.08%	8.29%
063	59,936	425	0.71%	46,251	77.17%	13.18%	80.73%	1.78%	1.27%	0.1%	4.04%	2.43%	4.28%
064	60,007	496	0.83%	44,827	74.7%	5.98%	89.24%	1.03%	1.14%	0.1%	4.16%	2.37%	4.23%
065	59,415	-96	-0.16%	44,449	74.81%	12.71%	79.18%	1.18%	1.27%	0.06%	6.51%	2.46%	7.08%
066	59,054	-457	-0.77%	43,879	74.3%	34.45%	53.88%	2.35%	2.07%	0.21%	7.4%	3.42%	8.38%
067	59,367	-144	-0.24%	44,550	75.04%	67.52%	22.1%	1.62%	2.59%	0.13%	5.89%	3.71%	6.28%
068	59,140	-371	-0.62%	44,313	74.93%	69.88%	19.89%	1.44%	2.71%	0.13%	5.6%	3.88%	6.12%
069	59,651	140	0.24%	46,047	77.19%	68.5%	22.93%	1.86%	2.1%	0.12%	4.08%	2.94%	4.88%
070	59,322	-189	-0.32%	45,268	76.31%	74.14%	16.28%	1.77%	2.28%	0.12%	4.94%	3.16%	5.49%
071	59,203	-308	-0.52%	45,550	76.94%	67.58%	16.63%	6.21%	2.12%	0.1%	6.77%	3.35%	7.75%



## Population Summary

GHDC-HousePlan-2021

District	Population	Deviation	% Devn.	[18+_Pop]	[% 18+_Pop]	[% NH18+_Wht]	[% 18+_AP_Blkl]	[% 18+_AP_Asn]	[% 18+_AP_Ind]	[% 18+_AP_Hwn]	[% 18+_AP_Oth]	[% NH18+_2+ Races]	[% H18+_Pop]
072	59,975	464	0.78%	45,925	76.57%	69.68%	16.03%	5.66%	1.87%	0.15%	6.47%	3.47%	6.73%
073	59,455	-56	-0.09%	44,961	75.62%	60.06%	30.26%	2.31%	2.26%	0.09%	4.83%	3.12%	5.58%
074	59,453	-58	-0.10%	44,149	74.26%	8.6%	69.97%	7.98%	1.7%	0.13%	11.84%	1.85%	13.89%
075	59,873	362	0.61%	44,777	74.79%	13.51%	71.98%	5.05%	1.68%	0.1%	8.65%	2.72%	9.8%
076	59,544	33	0.06%	45,413	76.27%	14.89%	71.27%	5.5%	1.72%	0.16%	7.63%	2.64%	8.37%
077	59,646	135	0.23%	43,403	72.77%	7.34%	74.02%	4.21%	1.8%	0.13%	13.15%	2.24%	14.91%
078	59,789	278	0.47%	45,365	75.88%	27.41%	56.82%	6.89%	1.74%	0.21%	7.83%	2.93%	8.61%
079	59,508	-3	-0.01%	45,458	76.39%	52.89%	15.65%	17.37%	1.68%	0.14%	11.98%	3.09%	12.87%
080	59,157	-354	-0.59%	47,688	80.61%	61.45%	14%	8.87%	1.6%	0.12%	13.08%	2.94%	14.75%
081	59,884	373	0.63%	45,348	75.73%	39.11%	12.69%	12.67%	3.75%	0.15%	30.24%	2.39%	34.92%
082	59,699	188	0.32%	48,887	81.89%	48.51%	21.75%	10.66%	1.72%	0.1%	16.31%	3.07%	18.28%
083	59,624	113	0.19%	46,307	77.67%	39.35%	52.37%	3.73%	1.25%	0.14%	3.87%	3.15%	4.05%
084	59,343	-168	-0.28%	47,225	79.58%	32.38%	58.13%	5.34%	1.35%	0.08%	3.62%	3.16%	3.55%
085	59,792	281	0.47%	46,309	77.45%	26.79%	54.84%	13.34%	1.46%	0.16%	4.46%	3.4%	4.56%
086	59,633	122	0.21%	45,637	76.53%	28.13%	56.59%	8.7%	1.24%	0.12%	5%	2.81%	6.37%
087	59,801	290	0.49%	46,173	77.21%	18.48%	65.97%	7.94%	1.61%	0.12%	7.31%	2.94%	7.5%
088	59,512	1	0.00%	46,477	78.1%	18.41%	67.7%	3.71%	1.93%	0.17%	9.39%	3%	10.39%
089	59,007	-504	-0.85%	47,155	79.91%	33.5%	58.56%	2.7%	1.26%	0.15%	4.33%	3.15%	4.66%
090	59,411	-100	-0.17%	46,508	78.28%	20.67%	74.25%	1.5%	1.47%	0.08%	3.74%	2.89%	3.39%
091	59,019	-492	-0.83%	45,395	76.92%	20.19%	72.81%	2%	1.44%	0.17%	4.99%	2.99%	4.75%
092	59,597	86	0.14%	44,307	74.34%	13.4%	76.69%	1.16%	1.28%	0.19%	8.34%	2.73%	9.01%
093	59,455	-56	-0.09%	44,281	74.48%	14.5%	74.87%	2.95%	1.61%	0.15%	7.73%	3.2%	8.09%
094	59,305	-206	-0.35%	44,803	75.55%	20.58%	65.74%	6.05%	1.56%	0.14%	7.31%	3.17%	7.62%
095	59,763	252	0.42%	46,128	77.18%	43.66%	24.28%	13.94%	1.81%	0.16%	15.66%	3.25%	17.58%
096	59,534	23	0.04%	45,289	76.07%	22.29%	23.77%	21.84%	2.34%	0.19%	28.11%	2.48%	31.91%
097	59,294	-217	-0.36%	42,583	71.82%	54.36%	11.17%	23.15%	1.53%	0.14%	8.94%	2.96%	10.13%
098	59,512	1	0.00%	42,682	71.72%	48.4%	28.27%	7.47%	2.12%	0.18%	13.22%	3.15%	15.17%
099	59,736	225	0.38%	42,537	71.21%	11.65%	23.24%	12.82%	3.51%	0.2%	45.78%	1.7%	52.86%
100	59,526	15	0.03%	44,064	74.02%	14.44%	31.67%	15.68%	2.56%	0.15%	33.81%	2.41%	38.92%
101	59,281	-230	-0.39%	45,347	76.49%	30.71%	25.82%	19.7%	2.28%	0.16%	20.27%	2.71%	23.61%
102	58,952	-559	-0.94%	44,877	76.12%	38.88%	29.37%	11.6%	1.99%	0.13%	17.04%	2.79%	19.97%
103	59,308	-203	-0.34%	43,664	73.62%	61.27%	13.66%	8.63%	2.04%	0.13%	12.88%	2.74%	15.13%
104	59,524	13	0.02%	43,661	73.35%	55.67%	19.59%	12.18%	1.69%	0.11%	10%	3.06%	11.52%
105	59,511	0	0.00%	43,243	72.66%	32.08%	43.35%	8.48%	1.89%	0.15%	14.31%	3.38%	15.92%
106	59,532	21	0.04%	44,091	74.06%	39.62%	40.02%	9.26%	2.06%	0.12%	9.47%	3.32%	10.44%
107	58,947	-564	-0.95%	43,486	73.77%	30.5%	27.11%	19.47%	2.2%	0.17%	19.53%	2.42%	22.62%
108	59,405	-106	-0.18%	44,311	74.59%	38.42%	20.39%	20.52%	2.24%	0.13%	17.47%	2.7%	19.94%
109	59,486	-25	-0.04%	44,473	74.76%	40.42%	48.54%	3.52%	1.94%	0.16%	6.15%	3.53%	6.39%
110	59,069	-442	-0.74%	44,030	74.54%	66.78%	25.59%	1.06%	2.07%	0.12%	4.27%	2.99%	4.55%
111	59,765	254	0.43%	44,383	74.26%	35.3%	53.03%	3.9%	1.7%	0.14%	6.55%	3.09%	7.16%
112	58,991	-520	-0.87%	43,954	74.51%	78.96%	13.08%	2.8%	1.87%	0.07%	2.97%	2.45%	3.25%
113	59,201	-310	-0.52%	43,906	74.16%	24.93%	66.65%	1.59%	1.54%	0.2%	5.94%	3.11%	6.04%
114	59,513	2	0.00%	43,502	73.1%	55.05%	31.39%	3.04%	1.89%	0.16%	8.43%	3.11%	9.05%

## Population Summary

GHDC-HousePlan-2021

District	Population	Deviation	% Devn.	[18+_Pop]	[% 18+_Pop]	[% NH18+_Wht]	[% 18+_AP_Blkl]	[% 18+_AP_Asn]	[% 18+_AP_Ind]	[% 18+_AP_Hwn]	[% 18+_AP_Oth]	[% NH18+_2+ Races]	[% H18+_Pop]
115	59,062	-449	-0.75%	44,162	74.77%	70.23%	19.51%	2.29%	2.18%	0.11%	5.29%	3.02%	5.84%
116	59,943	432	0.73%	45,302	75.58%	70.42%	12.93%	4.48%	2.42%	0.14%	8.37%	3.29%	10%
117	59,574	63	0.11%	49,997	83.92%	68.2%	15.05%	7.38%	1.58%	0.12%	6.59%	3.24%	7.65%
118	59,844	333	0.56%	48,350	80.79%	53.73%	29.37%	3.41%	1.58%	0.19%	10.56%	2.8%	11.81%
119	59,891	380	0.64%	45,332	75.69%	21.21%	67.4%	3.42%	1.54%	0.14%	7.03%	2.61%	8.06%
120	59,733	222	0.37%	47,997	80.35%	67.43%	22.79%	2.09%	1.75%	0.16%	5.35%	2.96%	5.62%
121	59,591	80	0.13%	45,496	76.35%	67.17%	25.1%	1.7%	2.2%	0.27%	3.55%	3.22%	4.13%
122	59,518	7	0.01%	43,184	72.56%	69.34%	15.58%	8.11%	1.85%	0.32%	4.68%	4.01%	5.26%
123	59,698	187	0.31%	46,931	78.61%	67.97%	19.67%	5.46%	2.03%	0.31%	4.31%	3.85%	4.99%
124	59,863	352	0.59%	47,628	79.56%	38.16%	53.65%	3.08%	1.56%	0.21%	3.68%	3.09%	4.34%
125	59,863	352	0.59%	44,610	74.52%	27.67%	66.53%	1.5%	1.57%	0.26%	3.11%	2.82%	3.77%
126	59,913	402	0.68%	45,800	76.44%	40.66%	51.48%	1.9%	1.84%	0.39%	3.58%	3.02%	4.6%
127	59,769	258	0.43%	45,675	76.42%	41.4%	42.71%	4.87%	2.33%	0.45%	7.55%	4.43%	10.13%
128	59,683	172	0.29%	47,025	78.79%	41.49%	55.61%	0.58%	0.99%	0.07%	1.44%	1.62%	1.67%
129	59,049	-462	-0.78%	45,727	77.44%	70.57%	21.36%	1.24%	2.3%	0.09%	4.36%	3.25%	4.79%
130	59,518	7	0.01%	45,447	76.36%	55.76%	36.98%	1.32%	1.78%	0.1%	3.92%	2.76%	4.39%
131	59,321	-190	-0.32%	46,120	77.75%	71.79%	23.69%	0.85%	1.79%	0.08%	1.77%	2.58%	1.87%
132	59,066	-445	-0.75%	44,684	75.65%	67.03%	24.34%	1.58%	2.05%	0.11%	4.51%	2.88%	5.02%
133	59,704	193	0.32%	45,813	76.73%	63.62%	29.28%	2.35%	1.51%	0.1%	2.98%	2.55%	3.13%
134	59,263	-248	-0.42%	45,749	77.2%	67.69%	18.79%	4.92%	2.35%	0.41%	5.31%	3.99%	6.42%
135	59,511	0	0.00%	44,554	74.87%	32.01%	57.33%	1.91%	1.82%	0.4%	6.58%	3.46%	8.02%
136	59,805	294	0.49%	45,173	75.53%	34.2%	54.3%	4.36%	1.8%	0.51%	5.18%	3.42%	6.44%
137	59,758	247	0.42%	46,253	77.4%	41.81%	51.25%	1.91%	1.52%	0.32%	3.3%	2.65%	4.52%
138	59,005	-506	-0.85%	44,980	76.23%	40.44%	16.22%	33.36%	1.27%	0.2%	8.39%	3.06%	9.19%
139	59,040	-471	-0.79%	46,978	79.57%	38.82%	55.12%	1.4%	0.9%	0.13%	3.5%	1.54%	4.05%
140	59,386	-125	-0.21%	46,873	78.93%	64.52%	29.65%	0.87%	1.91%	0.1%	2.75%	2.59%	3.16%
141	59,321	-190	-0.32%	46,459	78.32%	67.33%	25.13%	3.69%	1.42%	0.05%	2.26%	2.16%	2.79%
142	59,511	0	0.00%	44,230	74.32%	30.28%	63.95%	1.65%	1.13%	0.12%	3.29%	2.03%	3.56%
143	59,559	48	0.08%	46,340	77.81%	33.81%	59.63%	1.63%	1.33%	0.15%	3.98%	2.6%	4.19%
144	59,288	-223	-0.37%	46,102	77.76%	59.72%	30.64%	2.22%	1.75%	0.13%	5.24%	2.6%	5.97%
145	59,509	-2	0.00%	48,770	81.95%	62.13%	32.55%	1.33%	1.19%	0.1%	2.55%	1.93%	2.63%
146	59,511	0	0.00%	43,599	73.26%	52.18%	36.22%	3.14%	2.12%	0.25%	6.07%	3.87%	7.01%
147	59,511	0	0.00%	44,543	74.85%	55.65%	30.04%	6.14%	1.96%	0.22%	5.78%	3.64%	6.71%
148	59,593	82	0.14%	46,187	77.5%	60.19%	33.94%	1.47%	1.48%	0.08%	2.72%	2.28%	3.04%
149	59,595	84	0.14%	48,294	81.04%	68.06%	17.95%	6.43%	1.3%	0.18%	6.03%	3.35%	6.62%
150	60,003	492	0.83%	46,315	77.19%	57.65%	37.88%	1.16%	1.36%	0.1%	1.89%	2.23%	2.15%
151	58,926	-585	-0.98%	46,152	78.32%	51.32%	38.38%	1.78%	1.78%	0.42%	6.09%	2.54%	7.18%
152	59,511	0	0.00%	45,482	76.43%	70.61%	22.97%	2.08%	1.69%	0.12%	2.42%	2.39%	2.65%
153	58,998	-513	-0.86%	45,796	77.62%	34.93%	60.5%	1.55%	1.02%	0.13%	2.17%	1.98%	2.44%
154	58,998	-513	-0.86%	46,182	78.28%	32.61%	64.06%	0.54%	1.14%	0.11%	1.92%	1.84%	2.17%
155	59,639	128	0.22%	46,995	78.8%	58.54%	33.02%	0.81%	1.25%	0.05%	3.51%	1.63%	7.31%
156	59,163	-348	-0.58%	45,238	76.46%	66.34%	25.37%	0.78%	1.5%	0.09%	5.18%	1.95%	6.33%
157	59,971	460	0.77%	44,596	74.36%	62.21%	25.95%	1.44%	1.74%	0.19%	7.55%	2.48%	9.16%

## Population Summary

GHDC-HousePlan-2021

District	Population	Deviation	% Devn.	[18+ _Pop]	[% 18+ _Pop]	[% NH18+ _Wht]	[% 18+ _AP_Blkl]	[% 18+ _AP_Asn]	[% 18+ _AP_Ind]	[% 18+ _AP_Hwn]	[% 18+ _AP_Oth]	[% NH18+ 2 + Races]	[% H18+ _Pop]
158	60,024	513	0.86%	46,915	78.16%	60.34%	34.89%	0.72%	1.32%	0.12%	2.4%	1.84%	2.95%
159	59,374	-137	-0.23%	44,636	75.18%	68.84%	25.39%	0.97%	2.13%	0.11%	2.43%	2.95%	2.72%
160	59,127	-384	-0.65%	47,516	80.36%	68.25%	22.8%	2.3%	1.78%	0.25%	4.05%	3.12%	5.07%
161	59,542	31	0.05%	43,912	73.75%	62.37%	25.82%	3.12%	2.33%	0.2%	5.72%	3.83%	6.59%
162	59,400	-111	-0.19%	46,399	78.11%	33.92%	50.24%	5.08%	1.73%	0.26%	8.31%	2.52%	9.92%
163	59,505	-6	-0.01%	48,273	81.12%	43.74%	43.38%	4.88%	1.54%	0.27%	5.9%	3.16%	7.01%
164	59,756	245	0.41%	45,544	76.22%	55.78%	27.71%	5.76%	2.28%	0.31%	7.59%	4.13%	8.81%
165	59,590	79	0.13%	47,573	79.83%	46.78%	43.1%	3.67%	1.51%	0.3%	4.48%	3%	5.1%
166	59,913	402	0.68%	47,251	78.87%	84.84%	5.71%	3.32%	1.69%	0.18%	3.82%	3%	4.02%
167	59,838	327	0.55%	45,680	76.34%	63.16%	25.51%	1.97%	2.47%	0.33%	5.57%	3.38%	7.13%
168	59,508	-3	-0.01%	44,490	74.76%	39.01%	46.45%	3.42%	2.33%	1%	7.6%	4.5%	10.32%
169	59,955	444	0.75%	45,452	75.81%	59.35%	28.46%	0.81%	1.67%	0.12%	7.88%	2.02%	10.08%
170	59,961	450	0.76%	45,226	75.43%	65.73%	23.94%	1.35%	1.82%	0.11%	6.18%	2.53%	7.31%
171	59,339	-172	-0.29%	45,756	77.11%	54.05%	38.99%	0.8%	1.21%	0.05%	4.52%	1.73%	5.12%
172	59,591	80	0.13%	44,559	74.77%	58.09%	25.97%	0.95%	1.84%	0.05%	11.08%	1.89%	13.69%
173	59,442	-69	-0.12%	45,211	76.06%	57.5%	34.16%	1.1%	1.98%	0.06%	4.97%	2.39%	5.65%
174	59,508	-3	-0.01%	44,000	73.94%	61.73%	28.36%	1.85%	2.03%	0.31%	4.92%	2.99%	6.23%
175	59,650	139	0.23%	45,012	75.46%	68.71%	22.96%	1.64%	1.84%	0.14%	4.06%	2.56%	4.86%
176	59,710	199	0.33%	45,869	76.82%	79.9%	12.19%	0.64%	2.14%	0.14%	4.3%	2.57%	5.06%
177	59,509	-2	0.00%	45,676	76.75%	38.03%	52.85%	2.13%	1.62%	0.27%	4.87%	3.06%	6%
178	59,747	236	0.40%	44,977	75.28%	76.94%	15.05%	0.76%	1.54%	0.09%	4.82%	2.02%	5.93%
179	59,910	399	0.67%	47,497	79.28%	66.56%	24.78%	1.43%	1.6%	0.19%	5.07%	2.53%	5.73%
180	59,228	-283	-0.48%	45,588	76.97%	66.73%	19.45%	2.56%	2.49%	0.31%	5.09%	3.85%	9.45%

**Total: 10,711,908**

**Ideal District: 59,511**